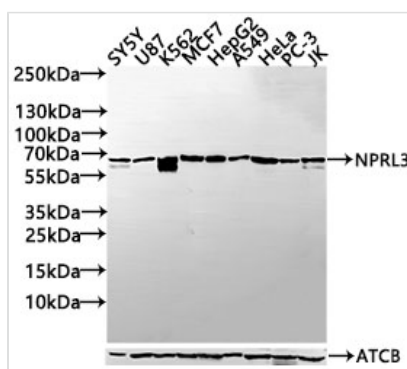




NPRL3 Antibody

Product Code	CSB-PA619643LA01HU
Storage	Upon receipt, store at -20°C or -80°C. Avoid repeated freeze.
Uniprot No.	Q12980
Immunogen	Synthesized peptide derived from human NPRL3 AA range: 465-510
Raised In	Rabbit
Species Reactivity	Human
Tested Applications	ELISA, WB, IHC; Recommended dilution: WB:1:500-1:2000, IHC:1:50-1:200
Form	Liquid
Storage Buffer	Liquid in PBS containing 50% glycerol, 0.5% BSA and 0.02% sodium azide.
Purification Method	Antigen affinity purification
Isotype	IgG
Clonality	Polyclonal
Product Type	Polyclonal Antibody
Immunogen Species	Homo sapiens (Human)
Research Area	Signal Transduction
Target Names	NPRL3

Image



Western Blot

Positive WB detected in: SY5Y whole cell lysate(30µg), U87 whole cell lysate(30µg), K562 whole cell lysate(30µg), MCF7 whole cell lysate(30µg), HepG2 whole cell lysate(30µg), A549 whole cell lysate(30µg), HeLa whole cell lysate(30µg), PC-3 whole cell lysate(30µg), JK whole cell lysate(30µg)

All lanes: NPRL3 antibody at 1:1000

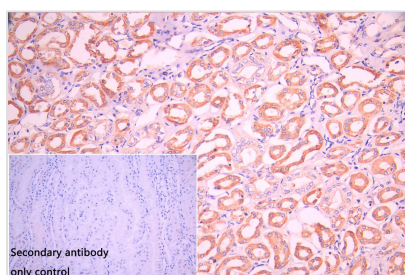
Secondary

Goat polyclonal to rabbit IgG at 1/40000 dilution

Predicted band size: 64 kDa

Observed band size: 64 kDa

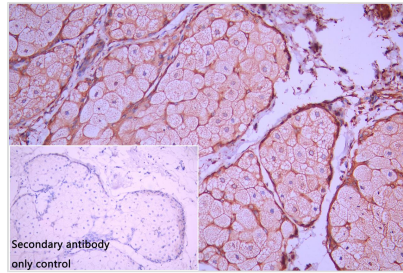
Exposure time: 10s



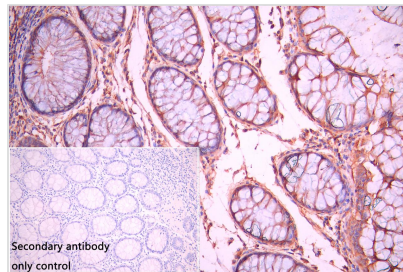
IHC image of CSB-PA619643LA01HU diluted at 1:100 and staining in paraffin-embedded human kidney tissue performed on a Leica Bond™ system. After dewaxing and hydration, antigen retrieval was mediated by high pressure in a citrate buffer (pH 6.0). Section was blocked with 10% normal goat serum 30min at RT. Then primary antibody (1% BSA) was incubated at 4°C overnight. The primary is detected by a Goat anti-rabbit polymer IgG labeled by HRP and visualized using 0.05% DAB. Secondary



antibody only control: uses 1% BSA instead of primary antibody



IHC image of CSB-PA619643LA01HU diluted at 1:100 and staining in paraffin-embedded human skin tissue performed on a Leica Bond™ system. After dewaxing and hydration, antigen retrieval was mediated by high pressure in a citrate buffer (pH 6.0). Section was blocked with 10% normal goat serum 30min at RT. Then primary antibody (1% BSA) was incubated at 4°C overnight. The primary is detected by a Goat anti-rabbit polymer IgG labeled by HRP and visualized using 0.05% DAB. Secondary antibody only control: uses 1% BSA instead of primary antibody



IHC image of CSB-PA619643LA01HU diluted at 1:100 and staining in paraffin-embedded human colorectal cancer performed on a Leica Bond™ system. After dewaxing and hydration, antigen retrieval was mediated by high pressure in a citrate buffer (pH 6.0). Section was blocked with 10% normal goat serum 30min at RT. Then primary antibody (1% BSA) was incubated at 4°C overnight. The primary is detected by a Goat anti-rabbit polymer IgG labeled by HRP and visualized using 0.05% DAB. Secondary antibody only control: uses 1% BSA instead of primary antibody

Usage

For Research Use Only. Not for use in diagnostic or therapeutic procedures.