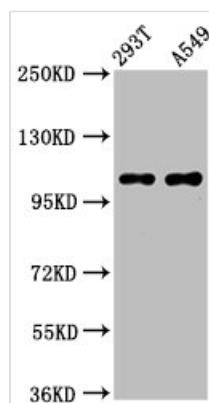




ICE2 Antibody

Product Code	CSB-PA717659LA01HU
Storage	Upon receipt, store at -20°C or -80°C. Avoid repeated freeze.
Uniprot No.	Q659A1
Immunogen	Recombinant Human Little elongation complex subunit 2 protein (876-982AA)
Raised In	Rabbit
Species Reactivity	Human
Tested Applications	ELISA, WB; Recommended dilution: WB:1:500-1:5000
Form	Liquid
Conjugate	Non-conjugated
Storage Buffer	Preservative: 0.03% Proclin 300 Constituents: 50% Glycerol, 0.01M PBS, pH 7.4
Purification Method	>95%, Protein G purified
Isotype	IgG
Clonality	Polyclonal
Alias	Little elongation complex subunit 2 (Interactor of little elongator complex ELL subunit 2) (NMDA receptor-regulated protein 2), ICE2, BRCC1 NARG2
Immunogen Species	Homo sapiens (Human)
Research Area	Others
Target Names	ICE2

Image



Western Blot

Positive WB detected in: 293T whole cell lysate, A549 whole cell lysate

All lanes: ICE2 antibody at 4.1µg/ml

Secondary

Goat polyclonal to rabbit IgG at 1/50000 dilution

Predicted band size: 111, 9 kDa

Observed band size: 111 kDa