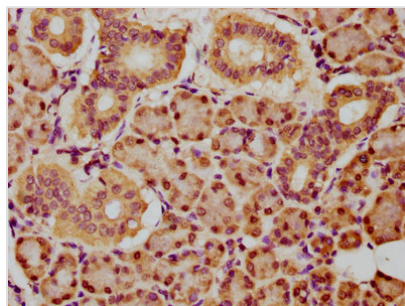




BHLHA15 Antibody

Product Code	CSB-PA755911LA01HU
Storage	Upon receipt, store at -20°C or -80°C. Avoid repeated freeze.
Uniprot No.	Q7RTS1
Immunogen	Recombinant Human Class A basic helix-loop-helix protein 15 protein (2-72AA)
Raised In	Rabbit
Species Reactivity	Human
Tested Applications	ELISA, IHC; Recommended dilution: IHC:1:20-1:200
Form	Liquid
Conjugate	Non-conjugated
Storage Buffer	Preservative: 0.03% Proclin 300 Constituents: 50% Glycerol, 0.01M PBS, pH 7.4
Purification Method	>95%, Protein G purified
Isotype	IgG
Clonality	Polyclonal
Alias	Class A basic helix-loop-helix protein 15 (bHLHa15) (Class B basic helix-loop-helix protein 8) (bHLHb8) (Muscle, intestine and stomach expression 1) (MIST-1), BHLHA15, BHLHB8 MIST1
Immunogen Species	Homo sapiens (Human)
Research Area	Epigenetics and Nuclear Signaling
Target Names	BHLHA15

Image



IHC image of CSB-PA755911LA01HU diluted at 1:150 and staining in paraffin-embedded human pancreatic tissue performed on a Leica Bond™ system. After dewaxing and hydration, antigen retrieval was mediated by high pressure in a citrate buffer (pH 6.0). Section was blocked with 10% normal goat serum 30min at RT. Then primary antibody (1% BSA) was incubated at 4°C overnight. The primary is detected by a biotinylated secondary antibody and visualized using an HRP conjugated SP system.

Usage

For Research Use Only. Not for use in diagnostic or therapeutic procedures.