

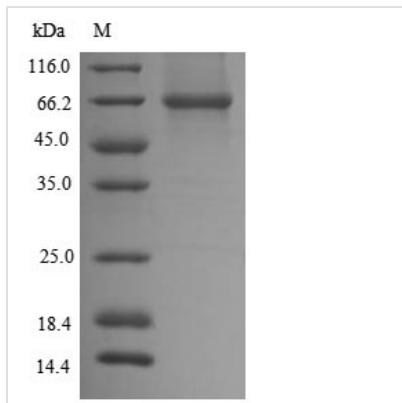


Recombinant Mouse Dihydrolipoyllysine-residue acetyltransferase component of pyruvate dehydrogenase complex, mitochondrial (Dlat)

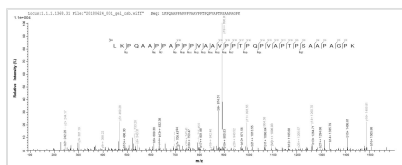
| | |
|--------------------------|--|
| Product Code | CSB-EP804374MOa0 |
| Relevance | The pyruvate dehydrogenase complex catalyzes the overall conversion of pyruvate to acetyl-CoA and CO ₂ , and thereby links the glycolytic pathway to the tricarboxylic cycle. |
| Abbreviation | Recombinant Mouse Dlat protein |
| Storage | The shelf life is related to many factors, storage state, buffer ingredients, storage temperature and the stability of the protein itself. Generally, the shelf life of liquid form is 6 months at -20°C/-80°C. The shelf life of lyophilized form is 12 months at -20°C/-80°C. |
| Uniprot No. | Q8BMF4 |
| Product Type | Recombinant Protein |
| Immunogen Species | Mus musculus (Mouse) |
| Purity | ≥ 85% as determined by SDS-PAGE. |
| Sequence | SLPPHQKVPLPSLSPTMQAGTIARWEKKEGEKISEGDLIAEVETDKATVGFESL EECYMAKILVPEGTRDVPVGSIIICITVEKPDIEAFKNYTLDLAAAAAPQAAPAA APAPAAAPAAPSASAPGSSYPHMQIVLPALSPTMTMGTVQRWEKKVGEKLS EGDLLAEIETDKATIGFEVQEEGYLAKILVPEGTRDVPPLGAPLCIIVEKQEDIAAF ADYRPTEVTSLKPQAAPPAPPVAAVPPTPQPVAPTPSAAPAGPKGRVFSPL AKKLAAEKGIDLTQVKGTGPEGRIIKKIDISFVPSKAAPAAAAAMAPPGRVAP APAGVFTDIPISNIRRVIAQRLMQSKQTIPHYLSVDVNMGEVLLVRKELNKMLE GKGKISVNDFIKASALACLKVPEANSSWMDTVIRQNHVVDVSVAVSTPAGLITP IVFNAHIKGLETIASDVVSLASKAREGKLPHEFQGGTFTISNLGMFGIKNFSAIL NPPQACILAIGASEDKLIPADNEKGFVDVASVMSVTLSCDHRVVDGAVGAQWLA EFKKYLEKPITMLL |
| Research Area | Signal Transduction |
| Source | E.coli |
| Target Names | Dlat |
| Protein Names | Dihydrolipoamide acetyltransferase component of pyruvate dehydrogenase complex Pyruvate dehydrogenase complex component E2 |
| Expression Region | 86-642aa |
| Notes | Repeated freezing and thawing is not recommended. Store working aliquots at 4°C for up to one week. |
| Tag Info | N-terminal 6xHis-tagged |
| Mol. Weight | 62.8 kDa |


Protein Length

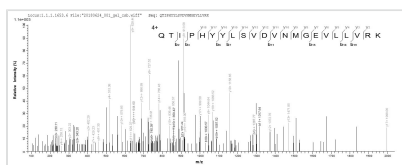
Full Length of Mature Protein

Image


(Tris-Glycine gel) Discontinuous SDS-PAGE (reduced) with 5% enrichment gel and 15% separation gel.



Based on the SEQUEST from database of E.coli host and target protein, the LC-MS/MS Analysis result of CSB-EP804374MOa0 could indicate that this peptide derived from E.coli-expressed Mus musculus (Mouse) Dlat.



Based on the SEQUEST from database of E.coli host and target protein, the LC-MS/MS Analysis result of CSB-EP804374MOa0 could indicate that this peptide derived from E.coli-expressed Mus musculus (Mouse) Dlat.

Reconstitution

We recommend that this vial be briefly centrifuged prior to opening to bring the contents to the bottom. Please reconstitute protein in deionized sterile water to a concentration of 0.1-1.0 mg/mL. We recommend to add 5-50% of glycerol (final concentration) and aliquot for long-term storage at -20°C/-80°C. Our default final concentration of glycerol is 50%. Customers could use it as reference.

Shelf Life

The shelf life is related to many factors, storage state, buffer ingredients, storage temperature and the stability of the protein itself. Generally, the shelf life of liquid form is 6 months at -20°C/-80°C. The shelf life of lyophilized form is 12 months at -20°C/-80°C.