

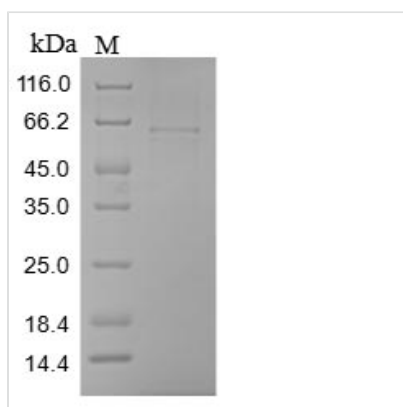


Recombinant Human Cartilage intermediate layer protein 1 (CILP), partial

Product Code	CSB-BP005437HUb1
Relevance	Probably plays a role in cartilage scaffolding. May act by antagonizing TGF-beta1 (TGFB1) and IGF1 functions. Has the ability to suppress IGF1-induced proliferation and sulfated proteoglycan synthesis, and inhibits ligand-induced IGF1R autophosphorylation. May inhibit TGFB1-mediated induction of cartilage matrix genes via its interaction with TGFB1. Overexpression may lead to impair chondrocyte growth and matrix repair and indirectly promote inorganic pyrophosphate (PPi) supersaturation in aging and osteoarthritis cartilage.
Abbreviation	Recombinant Human CILP protein, partial
Storage	The shelf life is related to many factors, storage state, buffer ingredients, storage temperature and the stability of the protein itself. Generally, the shelf life of liquid form is 6 months at -20°C/-80°C. The shelf life of lyophilized form is 12 months at -20°C/-80°C.
Uniprot No.	O75339
Product Type	Recombinant Protein
Immunogen Species	Homo sapiens (Human)
Purity	Greater than 85% as determined by SDS-PAGE.
Sequence	EDRTFLVGNLEIRERRLFNLDVPESRRRCFVKV RAYRSERFLPSEQIQGVVISVIN LEPRTGFLSNPRAWGRFDSVITGPNACVPAFCDDQSPDAYSAYVLASLAGE ELQAVESSPKFNPNAIGVPQPYLNKLNRYRRTDHEDPRVKKTAFQISMAKPRPN SAEESNGPIYAFENLRACEEAPPSAAHFRFYQIEGDRYDYNTVPFNEDDPMS WTEDYLAWWPKPMEFRACYIKVKIVGPLEVNVRSRNMGGTHRQTVGKLYGIR DVRSTRDRDQPNVSAACLEFKCSGMLYDQDRVDRTLVKVIPQGSCRRASVNP MLHEYLVNHLPLAVNNDTSEYTMLAPLDPLGHNYGIYTVTDQDPRTAKEIALGR CFDGTSDGSSRIMKSNVGVALTFNCVERQVGRQSAFQYLQSTPAQSPAAGTV QGRVPSRRQQRASRGGQRQGGVVASLRFPRVAQQPLIN
Research Area	Immunology
Source	Baculovirus
Target Names	CILP
Protein Names	Cartilage intermediate-layer protein
Expression Region	725-1184aa
Notes	Repeated freezing and thawing is not recommended. Store working aliquots at 4°C for up to one week.
Tag Info	N-terminal 10xHis-tagged and C-terminal Myc-tagged
Mol. Weight	55.7 kDa
Protein Length	Partial



Image



(Tris-Glycine gel) Discontinuous SDS-PAGE (reduced) with 5% enrichment gel and 15% separation gel.

Reconstitution

We recommend that this vial be briefly centrifuged prior to opening to bring the contents to the bottom. Please reconstitute protein in deionized sterile water to a concentration of 0.1-1.0 mg/mL. We recommend to add 5-50% of glycerol (final concentration) and aliquot for long-term storage at -20°C/-80°C. Our default final concentration of glycerol is 50%. Customers could use it as reference.

Shelf Life

The shelf life is related to many factors, storage state, buffer ingredients, storage temperature and the stability of the protein itself.

Generally, the shelf life of liquid form is 6 months at -20°C/-80°C. The shelf life of lyophilized form is 12 months at -20°C/-80°C.