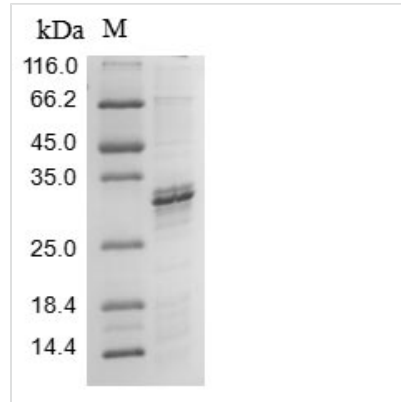




# Recombinant Human Sodium/glucose cotransporter 2 (SLC5A2), partial

<b>Product Code</b>	CSB-CF021679HU1
<b>Relevance</b>	Sodium-dependent glucose transporter. Has a Na <sup>+</sup> to glucose coupling ratio of 1:1. Efficient substrate transport in mammalian kidney is provided by the concerted action of a low affinity high capacity and a high affinity low capacity Na <sup>+</sup> /glucose cotransporter arranged in series along kidney proximal tubules.
<b>Abbreviation</b>	Recombinant Human SLC5A2 protein, partial
<b>Storage</b>	The shelf life is related to many factors, storage state, buffer ingredients, storage temperature and the stability of the protein itself. Generally, the shelf life of liquid form is 6 months at -20°C/-80°C. The shelf life of lyophilized form is 12 months at -20°C/-80°C.
<b>Uniprot No.</b>	P31639
<b>Product Type</b>	Transmembrane Protein
<b>Immunogen Species</b>	Homo sapiens(Human)
<b>Purity</b>	Greater than 90% as determined by SDS-PAGE.
<b>Sequence</b>	MEEHTEAGSAPEMGAQKALIDNPADILVIAAYFLLVIGVGLWSMCRTNRGTVG GYFLAGRSMVWWPVGASLFASNIGSGHFVGLAGTGAASGLAVAGFEWNA
<b>Research Area</b>	Signal Transduction
<b>Source</b>	in vitro E.coli expression system
<b>Target Names</b>	SLC5A2
<b>Protein Names</b>	Low affinity sodium-glucose cotransporter Solute carrier family 5 member 2
<b>Expression Region</b>	1-102aa
<b>Notes</b>	Repeated freezing and thawing is not recommended. Store working aliquots at 4°C for up to one week.
<b>Tag Info</b>	N-terminal 10xHis-SUMO-tagged and C-terminal Myc-tagged
<b>Mol. Weight</b>	30.5kDa
<b>Protein Length</b>	Partial
<b>Image</b>	



(Tris-Glycine gel) Discontinuous SDS-PAGE (reduced) with 5% enrichment gel and 15% separation gel.

### Reconstitution

We recommend that this vial be briefly centrifuged prior to opening to bring the contents to the bottom. Please reconstitute protein in deionized sterile water to a concentration of 0.1-1.0 mg/mL. We recommend to add 5-50% of glycerol (final concentration) and aliquot for long-term storage at -20°C/-80°C. Our default final concentration of glycerol is 50%. Customers could use it as reference.

### Shelf Life

The shelf life is related to many factors, storage state, buffer ingredients, storage temperature and the stability of the protein itself. Generally, the shelf life of liquid form is 6 months at -20°C/-80°C. The shelf life of lyophilized form is 12 months at -20°C/-80°C.