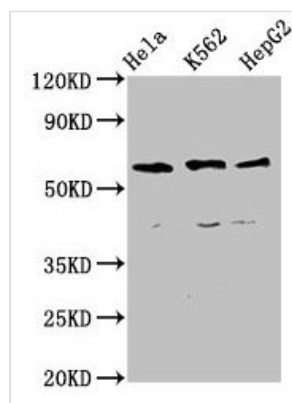




CCT5 Antibody

Product Code	CSB-PA004862EA01HU
Storage	Upon receipt, store at -20°C or -80°C. Avoid repeated freeze.
Uniprot No.	P48643
Immunogen	Recombinant Human T-complex protein 1 subunit epsilon protein (1-270AA)
Raised In	Rabbit
Species Reactivity	Human
Tested Applications	ELISA, WB, IF; Recommended dilution: WB:1:500-1:5000, IF:1:50-1:200
Form	Liquid
Conjugate	Non-conjugated
Storage Buffer	Preservative: 0.03% Proclin 300 Constituents: 50% Glycerol, 0.01M PBS, pH 7.4
Purification Method	>95%, Protein G purified
Isotype	IgG
Clonality	Polyclonal
Alias	T-complex protein 1 subunit epsilon, TCP-1-epsilon, CCT-epsilon, CCT5, CCTE, KIAA0098
Immunogen Species	Homo sapiens (Human)
Research Area	Signal transduction
Target Names	CCT5

Image



Western Blot

Positive WB detected in: HeLa whole cell lysate,

K562 whole cell lysate, HepG2 whole cell lysate

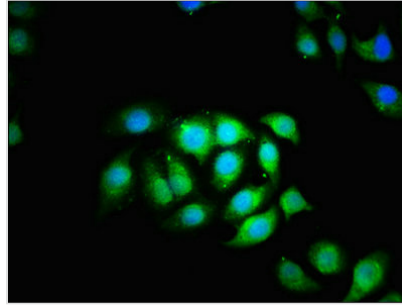
All lanes: CCT5 antibody at 4µg/ml

Secondary

Goat polyclonal to rabbit IgG at 1/50000 dilution

Predicted band size: 60, 50 kDa

Observed band size: 60 kDa



Immunofluorescence staining of A549 cells with CSB-PA004862EA01HU at 1:166, counter-stained with DAPI. The cells were fixed in 4% formaldehyde, permeabilized using 0.2% Triton X-100 and blocked in 10% normal Goat Serum. The cells were then incubated with the antibody overnight at 4°C. The secondary antibody was Alexa Fluor 488-conjugated AffiniPure Goat Anti-Rabbit IgG(H+L).

Usage

For Research Use Only. Not for use in diagnostic or therapeutic procedures.