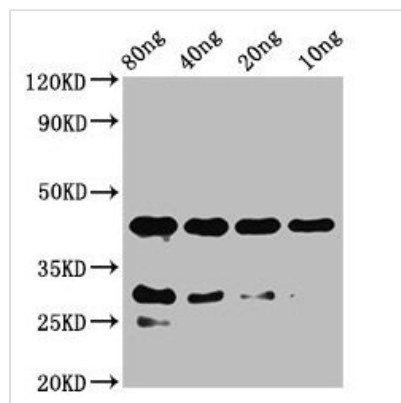




notchl Antibody

| | |
|----------------------------|--|
| Product Code | CSB-PA24369A0Rb |
| Storage | Upon receipt, store at -20°C or -80°C. Avoid repeated freeze. |
| Uniprot No. | X1WEZ2 |
| Immunogen | Recombinant Zebrafish Notch homolog,-like protein (683-784AA) |
| Raised In | Rabbit |
| Species Reactivity | Zebrafish |
| Tested Applications | ELISA, WB; Recommended dilution: WB:1:500-1:5000 |
| Form | Liquid |
| Conjugate | Non-conjugated |
| Storage Buffer | Preservative: 0.03% Proclin 300 Constituents: 50% Glycerol, 0.01M PBS, pH 7.4 |
| Purification Method | >95%, Protein G purified |
| Isotype | IgG |
| Clonality | Polyclonal |
| Alias | Notch homolog,-like, notchl |
| Immunogen Species | Zebrafish |
| Target Names | notchl |

Image



Western Blot

Positive WB detected in Recombinant protein

All lanes: notchl antibody at 2µg/ml

Secondary

Goat polyclonal to rabbit IgG at 1/50000 dilution

Predicted band size: 42 kDa

Observed band size: 42 kDa

Usage

For Research Use Only. Not for use in diagnostic or therapeutic procedures.