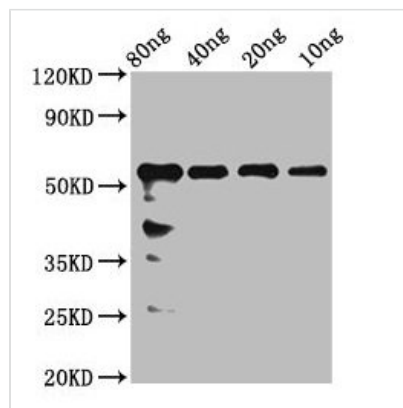




rhoaa Antibody

Product Code	CSB-PA24499A0Rb
Storage	Upon receipt, store at -20°C or -80°C. Avoid repeated freeze.
Uniprot No.	Q6NUX8
Immunogen	Recombinant Zebrafish Rho-related GTP-binding protein RhoA-A protein (1-190AA)
Raised In	Rabbit
Species Reactivity	Zebrafish
Tested Applications	ELISA, WB; Recommended dilution: WB:1:500-1:5000
Form	Liquid
Conjugate	Non-conjugated
Storage Buffer	Preservative: 0.03% Proclin 300 Constituents: 50% Glycerol, 0.01M PBS, pH 7.4
Purification Method	>95%, Protein G purified
Isotype	IgG
Clonality	Polyclonal
Alias	Rho-related GTP-binding protein RhoA-A, rhoaa
Immunogen Species	Zebrafish
Target Names	rhoaa

Image



Western Blot

Positive WB detected in Recombinant protein

All lanes: rhoaa antibody at 2.4µg/ml

Secondary

Goat polyclonal to rabbit IgG at 1/50000 dilution

Predicted band size: 51 kDa

Observed band size: 56 kDa

Usage

For Research Use Only. Not for use in diagnostic or therapeutic procedures.