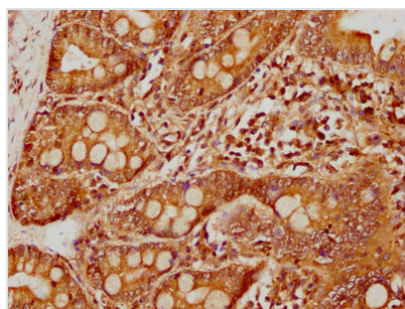




# CLEC14A Antibody

<b>Product Code</b>	CSB-PA801222LA01HU
<b>Storage</b>	Upon receipt, store at -20°C or -80°C. Avoid repeated freeze.
<b>Uniprot No.</b>	Q86T13
<b>Immunogen</b>	Recombinant Human C-type lectin domain family 14 member A protein (278-349AA)
<b>Raised In</b>	Rabbit
<b>Species Reactivity</b>	Human
<b>Tested Applications</b>	ELISA, IHC; Recommended dilution: IHC:1:200-1:500
<b>Form</b>	Liquid
<b>Conjugate</b>	Non-conjugated
<b>Storage Buffer</b>	Preservative: 0.03% Proclin 300 Constituents: 50% Glycerol, 0.01M PBS, pH 7.4
<b>Purification Method</b>	>95%, Protein G purified
<b>Isotype</b>	IgG
<b>Clonality</b>	Polyclonal
<b>Alias</b>	C-type lectin domain family 14 member A, Epidermal growth factor receptor 5, EGFR-5, CLEC14A, C14orf27, EGFR5, UNQ236/PRO269
<b>Immunogen Species</b>	Homo sapiens (Human)
<b>Research Area</b>	Cell biology
<b>Target Names</b>	CLEC14A

## Image



IHC image of CSB-PA801222LA01HU diluted at 1:400 and staining in paraffin-embedded human small intestine tissue performed on a Leica Bond<sup>TM</sup> system. After dewaxing and hydration, antigen retrieval was mediated by high pressure in a citrate buffer (pH 6.0). Section was blocked with 10% normal goat serum 30min at RT. Then primary antibody (1% BSA) was incubated at 4°C overnight. The primary is detected by a biotinylated secondary antibody and visualized using an HRP conjugated SP system.

## Usage

For Research Use Only. Not for use in diagnostic or therapeutic procedures.