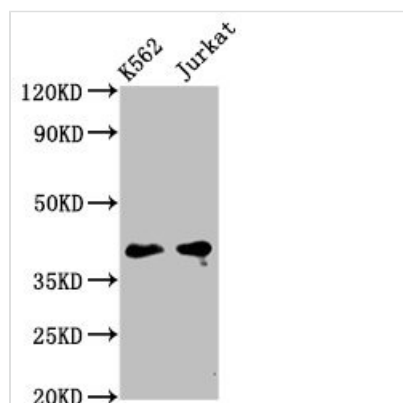




PURG Antibody

Product Code	CSB-PA891529LA01HU
Storage	Upon receipt, store at -20°C or -80°C. Avoid repeated freeze.
Uniprot No.	Q9UJV8
Immunogen	Recombinant Human Purine-rich element-binding protein gamma protein (242-345AA)
Raised In	Rabbit
Species Reactivity	Human
Tested Applications	ELISA, WB; Recommended dilution: WB:1:500-1:5000
Form	Liquid
Conjugate	Non-conjugated
Storage Buffer	Preservative: 0.03% Proclin 300 Constituents: 50% Glycerol, 0.01M PBS, pH 7.4
Purification Method	>95%, Protein G purified
Isotype	IgG
Clonality	Polyclonal
Alias	Purine-rich element-binding protein gamma, PURG
Immunogen Species	Homo sapiens (Human)
Research Area	Epigenetics and Nuclear Signaling
Target Names	PURG

Image



Western Blot

Positive WB detected in: K562 whole cell lysate, Jurkat whole cell lysate

All lanes: PURG antibody at 5µg/ml

Secondary

Goat polyclonal to rabbit IgG at 1/50000 dilution

Predicted band size: 40, 37 kDa

Observed band size: 40 kDa

Usage

For Research Use Only. Not for use in diagnostic or therapeutic procedures.