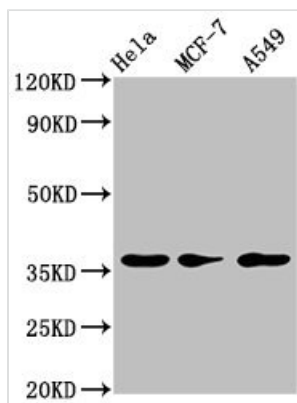




RCE1 Antibody

Product Code	CSB-PA896686LA01HU
Storage	Upon receipt, store at -20°C or -80°C. Avoid repeated freeze.
Uniprot No.	Q9Y256
Immunogen	Recombinant Human CAAX prenyl protease 2 protein (133-185AA)
Raised In	Rabbit
Species Reactivity	Human
Tested Applications	ELISA, WB; Recommended dilution: WB:1:500-1:5000
Form	Liquid
Conjugate	Non-conjugated
Storage Buffer	Preservative: 0.03% Proclin 300 Constituents: 50% Glycerol, 0.01M PBS, pH 7.4
Purification Method	>95%, Protein G purified
Isotype	IgG
Clonality	Polyclonal
Alias	CAAX prenyl protease 2, Farnesylated proteins-converting enzyme 2, FACE-2, Prenyl protein-specific endoprotease 2, RCE1 homolog, hRCE1, RCE1, FACE2, RCE1A, RCE1B
Immunogen Species	Homo sapiens (Human)
Research Area	Tags & Cell Markers
Target Names	RCE1

Image



Western Blot

Positive WB detected in: HeLa whole cell lysate, MCF-7 whole cell lysate, A549 whole cell lysate
 All lanes: RCE1 antibody at 3.2µg/ml
 Secondary
 Goat polyclonal to rabbit IgG at 1/50000 dilution
 Predicted band size: 36 kDa
 Observed band size: 36 kDa

Usage

For Research Use Only. Not for use in diagnostic or therapeutic procedures.