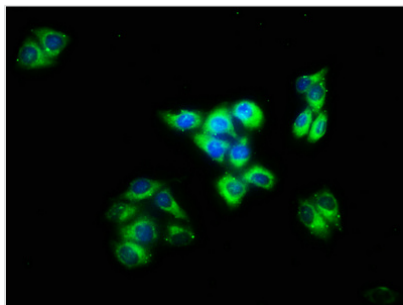




IMPG2 Antibody

Product Code	CSB-PA011704LA01HU
Storage	Upon receipt, store at -20°C or -80°C. Avoid repeated freeze.
Uniprot No.	Q9BZV3
Immunogen	Recombinant Human Interphotoreceptor matrix proteoglycan 2 protein (616-759AA)
Raised In	Rabbit
Species Reactivity	Human
Tested Applications	ELISA, IF; Recommended dilution: IF:1:50-1:200
Form	Liquid
Conjugate	Non-conjugated
Storage Buffer	Preservative: 0.03% Proclin 300 Constituents: 50% Glycerol, 0.01M PBS, pH 7.4
Purification Method	>95%, Protein G purified
Isotype	IgG
Clonality	Polyclonal
Alias	Interphotoreceptor matrix proteoglycan 2, Interphotoreceptor matrix proteoglycan of 200 kDa, IPM 200, Sialoprotein associated with cones and rods proteoglycan, Spacrcan, IMPG2, IPM200
Immunogen Species	Homo sapiens (Human)
Research Area	Neuroscience
Target Names	IMPG2

Image



Immunofluorescence staining of HeLa cells with CSB-PA011704LA01HU at 1:133, counter-stained with DAPI. The cells were fixed in 4% formaldehyde, permeabilized using 0.2% Triton X-100 and blocked in 10% normal Goat Serum. The cells were then incubated with the antibody overnight at 4°C. The secondary antibody was Alexa Fluor 488-conjugated AffiniPure Goat Anti-Rabbit IgG(H+L).

Usage

For Research Use Only. Not for use in diagnostic or therapeutic procedures.