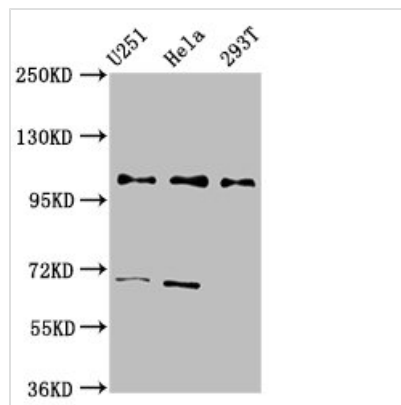




# PRPF40A Antibody

|                            |   |
|----------------------------|---|
| <b>Product Code</b>        | CSB-PA018769LA01HU  |
| <b>Storage</b>             | Upon receipt, store at -20°C or -80°C. Avoid repeated freeze.   |
| <b>Uniprot No.</b>         | O75400  |
| <b>Immunogen</b>           | Recombinant Human Pre-mRNA-processing factor 40 homolog A protein (120-266AA)   |
| <b>Raised In</b>           | Rabbit  |
| <b>Species Reactivity</b>  | Human   |
| <b>Tested Applications</b> | ELISA, WB, IHC; Recommended dilution: WB:1:500-1:5000, IHC:1:200-1:500  |
| <b>Form</b>                | Liquid  |
| <b>Conjugate</b>           | Non-conjugated  |
| <b>Storage Buffer</b>      | Preservative: 0.03% Proclin 300<br>Constituents: 50% Glycerol, 0.01M PBS, pH 7.4  |
| <b>Purification Method</b> | >95%, Protein G purified  |
| <b>Isotype</b>             | IgG   |
| <b>Clonality</b>           | Polyclonal  |
| <b>Alias</b>               | Pre-mRNA-processing factor 40 homolog A, Fas ligand-associated factor 1, Formin-binding protein 11, Formin-binding protein 3, Huntingtin yeast partner A, Huntingtin-interacting protein 10, HIP-10, Huntingtin-interacting protein A, Renal carcinoma antigen NY-REN-6, PRPF40A, FBP11, FLAF1, FNBP3, HIP10, HYPA, HSPC225 |
| <b>Immunogen Species</b>   | Homo sapiens (Human)  |
| <b>Research Area</b>       | Epigenetics and Nuclear Signaling   |
| <b>Target Names</b>        | PRPF40A   |

## Image



### Western Blot

Positive WB detected in: U251 whole cell lysate, HeLa whole cell lysate, 293T whole cell lysate

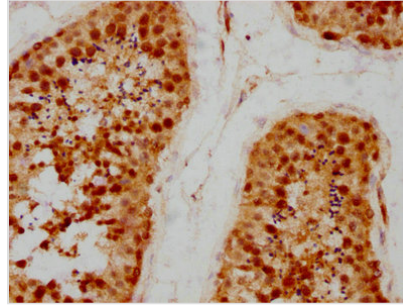
All lanes: PRPF40A antibody at 2.7µg/ml

Secondary

Goat polyclonal to rabbit IgG at 1/50000 dilution

Predicted band size: 109, 106, 107, 11 kDa

Observed band size: 109 kDa



IHC image of CSB-PA018769LA01HU diluted at 1:200 and staining in paraffin-embedded human testis tissue performed on a Leica Bond™ system. After dewaxing and hydration, antigen retrieval was mediated by high pressure in a citrate buffer (pH 6.0). Section was blocked with 10% normal goat serum 30min at RT. Then primary antibody (1% BSA) was incubated at 4°C overnight. The primary is detected by a biotinylated secondary antibody and visualized using an HRP conjugated SP system.

## Usage

For Research Use Only. Not for use in diagnostic or therapeutic procedures.