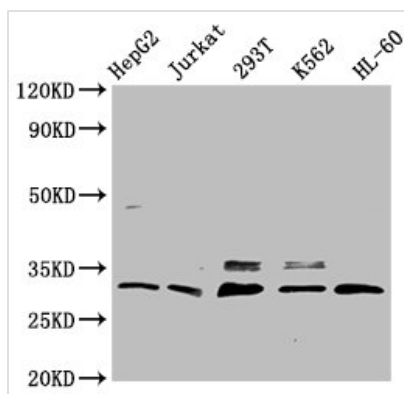




GEMIN2 Antibody

Product Code	CSB-PA021329LA01HU
Storage	Upon receipt, store at -20°C or -80°C. Avoid repeated freeze.
Uniprot No.	O14893
Immunogen	Recombinant Human Gem-associated protein 2 protein (1-280AA)
Raised In	Rabbit
Species Reactivity	Human
Tested Applications	ELISA, WB, IF, IP; Recommended dilution: WB:1:500-1:5000, IF:1:50-1:200, IP:1:200-1:2000
Form	Liquid
Conjugate	Non-conjugated
Storage Buffer	Preservative: 0.03% Proclin 300 Constituents: 50% Glycerol, 0.01M PBS, pH 7.4
Purification Method	>95%, Protein G purified
Isotype	IgG
Clonality	Polyclonal
Alias	Gem-associated protein 2, Gemin-2, Component of gems 2, Survival of motor neuron protein-interacting protein 1, SMN-interacting protein 1, GEMIN2, SIP1
Immunogen Species	Homo sapiens (Human)
Research Area	Neuroscience; Signal transduction
Target Names	GEMIN2

Image



Western Blot

Positive WB detected in: HepG2 whole cell lysate, Jurkat whole cell lysate, 293T whole cell lysate, K562 whole cell lysate, HL-60 whole cell lysate

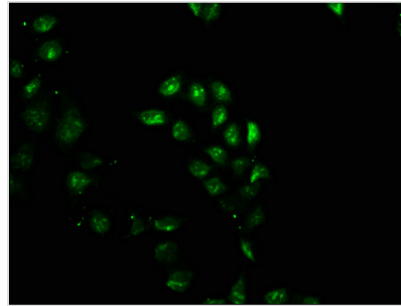
All lanes: GEMIN2 antibody at 3.7µg/ml

Secondary

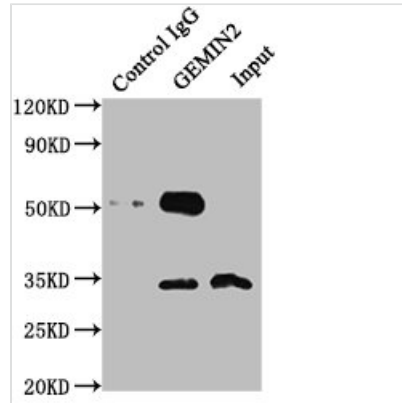
Goat polyclonal to rabbit IgG at 1/50000 dilution

Predicted band size: 32, 30, 29, 5 kDa

Observed band size: 32 kDa



Immunofluorescence staining of HeLa cells with CSB-PA021329LA01HU at 1:100, counter-stained with DAPI. The cells were fixed in 4% formaldehyde, permeabilized using 0.2% Triton X-100 and blocked in 10% normal Goat Serum. The cells were then incubated with the antibody overnight at 4°C. The secondary antibody was Alexa Fluor 488-conjugated AffiniPure Goat Anti-Rabbit IgG(H+L).



Immunoprecipitating GEMIN2 in 293T whole cell lysate

Lane 1: Rabbit control IgG instead of CSB-PA021329LA01HU in 293T whole cell lysate. For western blotting, a HRP-conjugated Protein G antibody was used as the secondary antibody (1/50000)

Lane 2: CSB-PA021329LA01HU (6μg) + 293T whole cell lysate (0.5mg)

Lane 3: 293T whole cell lysate (20μg)

Usage

For Research Use Only. Not for use in diagnostic or therapeutic procedures.