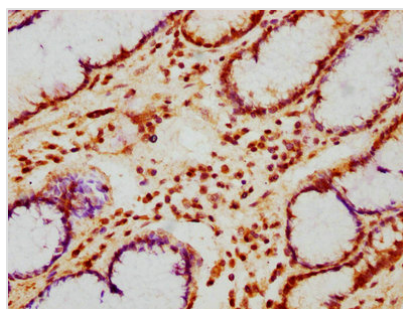




PHLDB1 Antibody

Product Code	CSB-PA773033LA01HU
Storage	Upon receipt, store at -20°C or -80°C. Avoid repeated freeze.
Uniprot No.	Q86UU1
Immunogen	Recombinant Human Pleckstrin homology-like domain family B member 1 protein (233-423AA)
Raised In	Rabbit
Species Reactivity	Human
Tested Applications	ELISA, IHC; Recommended dilution: IHC:1:200-1:500
Form	Liquid
Conjugate	Non-conjugated
Storage Buffer	Preservative: 0.03% Proclin 300 Constituents: 50% Glycerol, 0.01M PBS, pH 7.4
Purification Method	>95%, Protein G purified
Isotype	IgG
Clonality	Polyclonal
Alias	Pleckstrin homology-like domain family B member 1, Protein LL5-alpha, PHLDB1, KIAA0638, LL5A, DLNB07
Immunogen Species	Homo sapiens (Human)
Research Area	Signal transduction
Target Names	PHLDB1

Image



IHC image of CSB-PA773033LA01HU diluted at 1:200 and staining in paraffin-embedded human gastric cancer performed on a Leica Bond™ system. After dewaxing and hydration, antigen retrieval was mediated by high pressure in a citrate buffer (pH 6.0). Section was blocked with 10% normal goat serum 30min at RT. Then primary antibody (1% BSA) was incubated at 4°C overnight. The primary is detected by a biotinylated secondary antibody and visualized using an HRP conjugated SP system.

Usage

For Research Use Only. Not for use in diagnostic or therapeutic procedures.