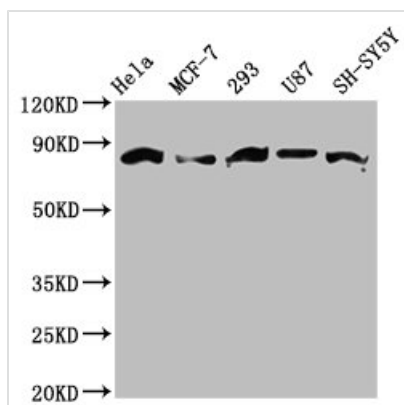




# BARD1 Antibody

<b>Product Code</b>	CSB-PA860351LA01HU
<b>Storage</b>	Upon receipt, store at -20°C or -80°C. Avoid repeated freeze.
<b>Uniprot No.</b>	Q99728
<b>Immunogen</b>	Recombinant Human BRCA1-associated RING domain protein 1 protein (428-777AA)
<b>Raised In</b>	Rabbit
<b>Species Reactivity</b>	Human
<b>Tested Applications</b>	ELISA, WB; Recommended dilution: WB:1:500-1:5000
<b>Form</b>	Liquid
<b>Conjugate</b>	Non-conjugated
<b>Storage Buffer</b>	Preservative: 0.03% Proclin 300 Constituents: 50% Glycerol, 0.01M PBS, pH 7.4
<b>Purification Method</b>	>95%, Protein G purified
<b>Isotype</b>	IgG
<b>Clonality</b>	Polyclonal
<b>Alias</b>	BRCA1-associated RING domain protein 1, RING-type E3 ubiquitin transferase BARD1, , BARD1
<b>Immunogen Species</b>	Homo sapiens (Human)
<b>Research Area</b>	Epigenetics and Nuclear Signaling; Cancer; Cell biology; Metabolism
<b>Target Names</b>	BARD1

## Image



### Western Blot

Positive WB detected in: HeLa whole cell lysate, MCF-7 whole cell lysate, 293 whole cell lysate, U87 whole cell lysate, SH-SY5Y whole cell lysate

All lanes: BARD1 antibody at 3.6µg/ml

Secondary

Goat polyclonal to rabbit IgG at 1/50000 dilution

Predicted band size: 87, 85, 76, 15 kDa

Observed band size: 87 kDa

## Usage

For Research Use Only. Not for use in diagnostic or therapeutic procedures.