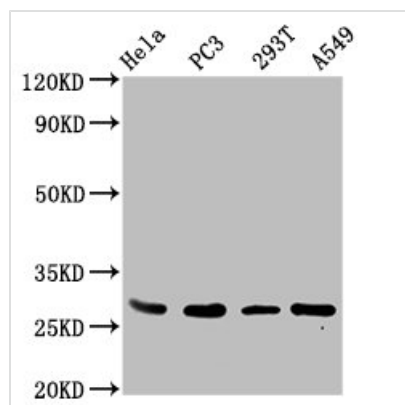




EFHD1 Antibody

Product Code	CSB-PA880107LA01HU
Storage	Upon receipt, store at -20°C or -80°C. Avoid repeated freeze.
Uniprot No.	Q9BUP0
Immunogen	Recombinant Human EF-hand domain-containing protein D1 protein (15-72AA)
Raised In	Rabbit
Species Reactivity	Human
Tested Applications	ELISA, WB, IHC, IF; Recommended dilution: WB:1:500-1:5000, IHC:1:500-1:1000, IF:1:50-1:200
Form	Liquid
Conjugate	Non-conjugated
Storage Buffer	Preservative: 0.03% Proclin 300 Constituents: 50% Glycerol, 0.01M PBS, pH 7.4
Purification Method	>95%, Protein G purified
Isotype	IgG
Clonality	Polyclonal
Alias	EF-hand domain-containing protein D1, EF-hand domain-containing protein 1, Swiprosin-2, EFHD1, SWS2, PP3051
Immunogen Species	Homo sapiens (Human)
Research Area	Cell biology
Target Names	EFHD1

Image



Western Blot

Positive WB detected in: HeLa whole cell lysate, PC-3 whole cell lysate, 293T whole cell lysate, A549 whole cell lysate

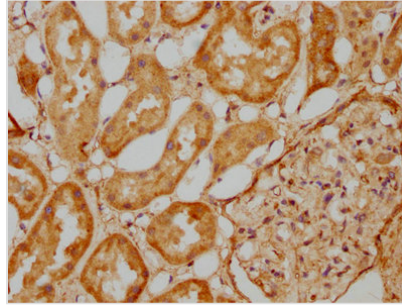
All lanes: EFHD1 antibody at 3.4μg/ml

Secondary

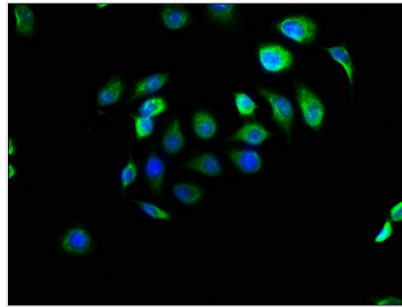
Goat polyclonal to rabbit IgG at 1/50000 dilution

Predicted band size: 27, 17 kDa

Observed band size: 27 kDa



IHC image of CSB-PA880107LA01HU diluted at 1:500 and staining in paraffin-embedded human kidney tissue performed on a Leica Bond™ system. After dewaxing and hydration, antigen retrieval was mediated by high pressure in a citrate buffer (pH 6.0). Section was blocked with 10% normal goat serum 30min at RT. Then primary antibody (1% BSA) was incubated at 4°C overnight. The primary is detected by a biotinylated secondary antibody and visualized using an HRP conjugated SP system.



Immunofluorescence staining of A549 cells with CSB-PA880107LA01HU at 1:166, counter-stained with DAPI. The cells were fixed in 4% formaldehyde, permeabilized using 0.2% Triton X-100 and blocked in 10% normal Goat Serum. The cells were then incubated with the antibody overnight at 4°C. The secondary antibody was Alexa Fluor 488-conjugated AffiniPure Goat Anti-Rabbit IgG(H+L).