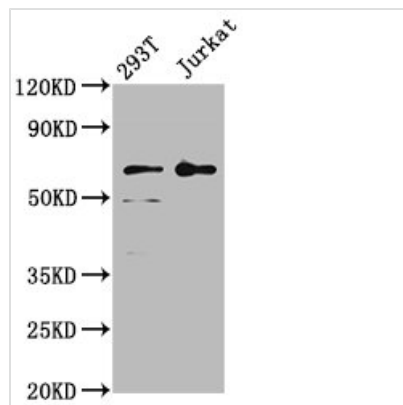




# LILRB2 Antibody

|                            |  |
|----------------------------|--|
| <b>Product Code</b>        | CSB-PA013000LA01HU   |
| <b>Storage</b>             | Upon receipt, store at -20°C or -80°C. Avoid repeated freeze.  |
| <b>Uniprot No.</b>         | Q8N423   |
| <b>Immunogen</b>           | Recombinant Human Leukocyte immunoglobulin-like receptor subfamily B member 2 protein (406-563AA)  |
| <b>Raised In</b>           | Rabbit   |
| <b>Species Reactivity</b>  | Human  |
| <b>Tested Applications</b> | ELISA, WB, IF; Recommended dilution: WB:1:500-1:5000, IF:1:50-1:200  |
| <b>Form</b>                | Liquid   |
| <b>Conjugate</b>           | Non-conjugated   |
| <b>Storage Buffer</b>      | Preservative: 0.03% Proclin 300<br>Constituents: 50% Glycerol, 0.01M PBS, pH 7.4   |
| <b>Purification Method</b> | >95%, Protein G purified   |
| <b>Isotype</b>             | IgG  |
| <b>Clonality</b>           | Polyclonal   |
| <b>Alias</b>               | Leukocyte immunoglobulin-like receptor subfamily B member 2 (LIR-2) (Leukocyte immunoglobulin-like receptor 2) (CD85 antigen-like family member D) (Immunoglobulin-like transcript 4) (ILT-4) (Monocyte/macrophage immunoglobulin-like receptor 10) (MIR-10) (CD antigen CD85d), LILRB2, ILT4 LIR2 MIR10 |
| <b>Immunogen Species</b>   | Homo sapiens (Human)   |
| <b>Research Area</b>       | Immunology   |
| <b>Target Names</b>        | LILRB2   |

## Image



### Western Blot

Positive WB detected in: 293T whole cell lysate, Jurkat whole cell lysate

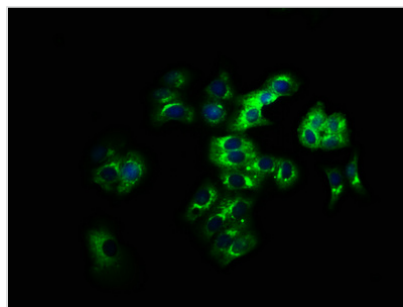
All lanes: LILRB2 antibody at 4µg/ml

Secondary

Goat polyclonal to rabbit IgG at 1/50000 dilution

Predicted band size: 66, 65, 56, 52 kDa

Observed band size: 66 kDa



Immunofluorescence staining of HepG2 cells with CSB-PA013000LA01HU at 1:166, counter-stained with DAPI. The cells were fixed in 4% formaldehyde, permeabilized using 0.2% Triton X-100 and blocked in 10% normal Goat Serum. The cells were then incubated with the antibody overnight at 4°C. The secondary antibody was Alexa Fluor 488-conjugated AffiniPure Goat Anti-Rabbit IgG(H+L).

**Usage**

For Research Use Only. Not for use in diagnostic or therapeutic procedures.