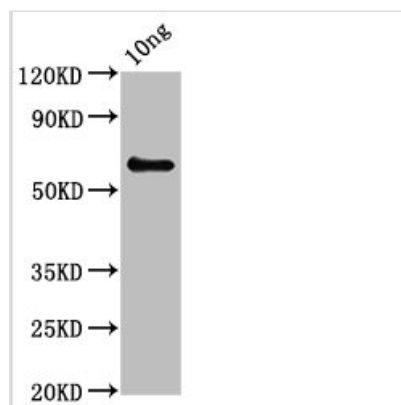




pepP Antibody

| | |
|----------------------------|---|
| Product Code | CSB-PA303407LA01MLW |
| Storage | Upon receipt, store at -20°C or -80°C. Avoid repeated freeze. |
| Uniprot No. | P75313 |
| Immunogen | Recombinant Mycoplasma pneumoniae Putative Xaa-Pro aminopeptidase protein (1-354AA) |
| Raised In | Rabbit |
| Species Reactivity | Mycoplasma pneumoniae |
| Tested Applications | ELISA, WB; Recommended dilution: WB:1:500-1:5000 |
| Form | Liquid |
| Conjugate | Non-conjugated |
| Storage Buffer | Preservative: 0.03% Proclin 300 Constituents: 50% Glycerol, 0.01M PBS, pH 7.4 |
| Purification Method | >95%, Protein G purified |
| Isotype | IgG |
| Clonality | Polyclonal |
| Alias | Putative Xaa-Pro aminopeptidase (X-Pro aminopeptidase) (EC 3.4.11.9) (Aminoacylproline aminopeptidase) (Aminopeptidase P) (APP), pepP |
| Immunogen Species | Mycoplasma pneumoniae |
| Target Names | pepP |

Image



Western Blot

Positive WB detected in Recombinant protein

All lanes: pepP antibody at 3.8µg/ml

Secondary

Goat polyclonal to rabbit IgG at 1/50000 dilution

Predicted band size: 58 kDa

Observed band size: 58 kDa

Usage

For Research Use Only. Not for use in diagnostic or therapeutic procedures.