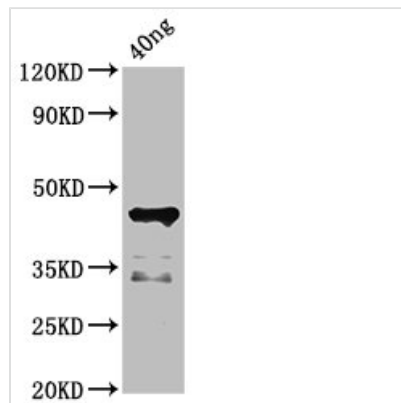




ligA Antibody

Product Code	CSB-PA718299LA01DAAA
Storage	Upon receipt, store at -20°C or -80°C. Avoid repeated freeze.
Uniprot No.	Q6API9
Immunogen	Recombinant Desulfotalea psychrophila DNA ligase protein (340-679AA)
Raised In	Rabbit
Species Reactivity	Desulfotalea psychrophila
Tested Applications	ELISA, WB; Recommended dilution: WB:1:500-1:5000
Form	Liquid
Conjugate	Non-conjugated
Storage Buffer	Preservative: 0.03% Proclin 300 Constituents: 50% Glycerol, 0.01M PBS, pH 7.4
Purification Method	>95%, Protein G purified
Isotype	IgG
Clonality	Polyclonal
Alias	DNA ligase (EC 6.5.1.2) (Polydeoxyribonucleotide synthase [NAD(+)]), ligA
Immunogen Species	Desulfotalea psychrophila
Target Names	ligA

Image



Western Blot

Positive WB detected in Recombinant protein

All lanes: ligA antibody at 4.5µg/ml

Secondary

Goat polyclonal to rabbit IgG at 1/50000 dilution

Predicted band size: 45 kDa

Observed band size: 45 kDa

Usage

For Research Use Only. Not for use in diagnostic or therapeutic procedures.