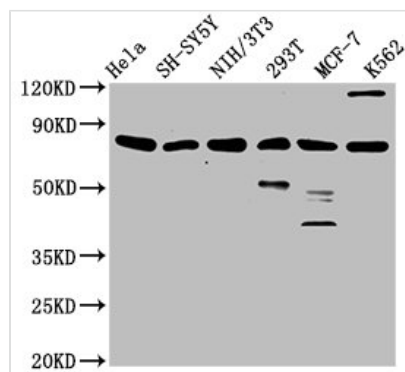




# KMT2E Antibody

<b>Product Code</b>	CSB-PA818269LA01HU
<b>Storage</b>	Upon receipt, store at -20°C or -80°C. Avoid repeated freeze.
<b>Uniprot No.</b>	Q8IZD2
<b>Immunogen</b>	Recombinant Human Histone-lysine N-methyltransferase 2E protein (182-316AA)
<b>Raised In</b>	Rabbit
<b>Species Reactivity</b>	Human, Mouse
<b>Tested Applications</b>	ELISA, WB; Recommended dilution: WB:1:500-1:5000
<b>Form</b>	Liquid
<b>Conjugate</b>	Non-conjugated
<b>Storage Buffer</b>	Preservative: 0.03% Proclin 300 Constituents: 50% Glycerol, 0.01M PBS, pH 7.4
<b>Purification Method</b>	>95%, Protein G purified
<b>Isotype</b>	IgG
<b>Clonality</b>	Polyclonal
<b>Alias</b>	Inactive histone-lysine N-methyltransferase 2E (Inactive lysine N-methyltransferase 2E) (Myeloid/lymphoid or mixed-lineage leukemia protein 5), KMT2E, MLL5
<b>Immunogen Species</b>	Homo sapiens (Human)
<b>Research Area</b>	Epigenetics and Nuclear Signaling; Cancer; Developmental biology; Stem cells
<b>Target Names</b>	KMT2E

## Image



### Western Blot

Positive WB detected in: HeLa whole cell lysate, SH-SY5Y whole cell lysate, NIH/3T3 whole cell lysate, 293T whole cell lysate, MCF-7 whole cell lysate, K562 whole cell lysate

All lanes: KMT2E antibody at 3.1µg/ml

### Secondary

Goat polyclonal to rabbit IgG at 1/50000 dilution  
Predicted band size: 205, 196, 69, 99, 186, 181, 201, 132 kDa

Observed band size: 80 kDa

## Usage

For Research Use Only. Not for use in diagnostic or therapeutic procedures.