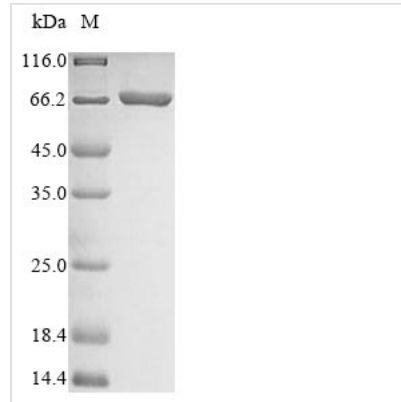




Recombinant Candida albicans Acetyl-CoA carboxylase (ACC1), partial

Product Code	CSB-EP2727CZD
Abbreviation	Recombinant Candida albicans ACC1 protein, partial
Storage	The shelf life is related to many factors, storage state, buffer ingredients, storage temperature and the stability of the protein itself. Generally, the shelf life of liquid form is 6 months at -20°C/-80°C. The shelf life of lyophilized form is 12 months at -20°C/-80°C.
Uniprot No.	A0A1D8PRR7
Product Type	Recombinant Protein
Immunogen Species	Candida albicans (strain SC5314 / ATCC MYA-2876) (Yeast)
Purity	≥ 90% as determined by SDS-PAGE.
Sequence	GSAMRSLGDKISSTIVAQHAQVPCIPWSGTGVDEVKIDPQTNLVSVADDIYAKG CCTSPEDGLEKAKKIGFPVMIKASEGGGGKGIKVDDEKNFITLYNQAANEIPG SPIFIMKLAGDARHLEVQLLADQYGTNISLFGSDSVQRRHQKIIIEAPVTIARK ETFHEMENA AAVRLGKLVGYVSAGTVEYLYSHAEDKFYFLELNPRLQVEHPTTE MVTGVNLPAAQLQIAMGIPMHRIRDITLYGADPHTTTDIDFEFKSETSLVSQR RPTPKGHCTACRITSEDPGEGFKPSGGSLHELNFRSSSNVWGYFSVGNQSSI HSFSDSQFGHIFAFGENRQASRKHMVVALKELSIRGDFRTTVEYLIKLLLETPDF EDNTITTGWLDELITKKLTAERPDPVAVVCGAVTKVHIQAEEEKKEYIQSLEKG QVPHRNLKTIFFVEFIYEGERYKFTATKSSDKYTLFLNGSRCVVGARSLSDG GLLCALDGKSHSVYWKEEASATRLSVDGKTCLELVENDPTQLRTPSPGKLVKY LVDSGEHVDAGQPYAEEVEMK
Research Area	Cancer
Source	E.coli
Target Names	ACC1
Expression Region	217-775aa
Notes	Repeated freezing and thawing is not recommended. Store working aliquots at 4°C for up to one week.
Tag Info	N-terminal 10xHis-tagged
Mol. Weight	67.3 kDa
Protein Length	Partial
Image	



(Tris-Glycine gel) Discontinuous SDS-PAGE (reduced) with 5% enrichment gel and 15% separation gel.

Reconstitution

We recommend that this vial be briefly centrifuged prior to opening to bring the contents to the bottom. Please reconstitute protein in deionized sterile water to a concentration of 0.1-1.0 mg/mL. We recommend to add 5-50% of glycerol (final concentration) and aliquot for long-term storage at $-20^{\circ}\text{C}/-80^{\circ}\text{C}$. Our default final concentration of glycerol is 50%. Customers could use it as reference.

Shelf Life

The shelf life is related to many factors, storage state, buffer ingredients, storage temperature and the stability of the protein itself.

Generally, the shelf life of liquid form is 6 months at $-20^{\circ}\text{C}/-80^{\circ}\text{C}$. The shelf life of lyophilized form is 12 months at $-20^{\circ}\text{C}/-80^{\circ}\text{C}$.