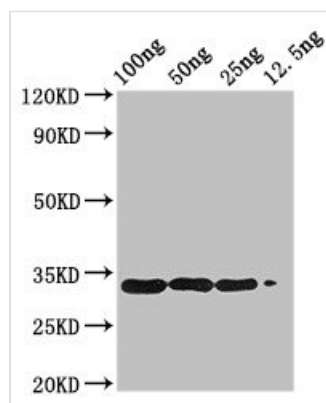




# BETVIA Antibody

<b>Product Code</b>	CSB-PA322213HA01BSS
<b>Storage</b>	Upon receipt, store at -20°C or -80°C. Avoid repeated freeze.
<b>Uniprot No.</b>	P15494
<b>Immunogen</b>	Recombinant Betula pendula Major pollen allergen Bet v 1-A protein (2-160AA)
<b>Raised In</b>	Rabbit
<b>Species Reactivity</b>	Betula pendula
<b>Tested Applications</b>	ELISA, WB; Recommended dilution: WB:1:500-1:5000
<b>Form</b>	Liquid
<b>Conjugate</b>	Non-conjugated
<b>Storage Buffer</b>	Preservative: 0.03% Proclin 300 Constituents: 50% Glycerol, 0.01M PBS, pH 7.4
<b>Purification Method</b>	>95%, Protein G purified
<b>Isotype</b>	IgG
<b>Clonality</b>	Polyclonal
<b>Alias</b>	Major pollen allergen Bet v 1-A (Allergen Bet v I-A) (allergen Bet v 1-A), BETVIA, BETVI
<b>Immunogen Species</b>	Betula pendula
<b>Research Area</b>	Others
<b>Target Names</b>	BETVIA

## Image



### Western Blot

Positive WB detected in Recombinant protein

All lanes: BETVIA antibody at 2.8µg/ml

Secondary

Goat polyclonal to rabbit IgG at 1/50000 dilution

Predicted band size: 34 kDa

Observed band size: 34 kDa