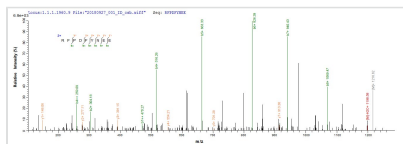




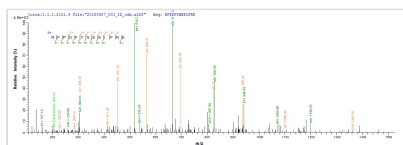
Recombinant Escherichia coli Relaxosome protein TraY (traY)

Product Code	CSB-EP319205ENL
Abbreviation	Recombinant E.coli traY protein
Storage	The shelf life is related to many factors, storage state, buffer ingredients, storage temperature and the stability of the protein itself. Generally, the shelf life of liquid form is 6 months at -20°C/-80°C. The shelf life of lyophilized form is 12 months at -20°C/-80°C.
Uniprot No.	P10512
Product Type	Recombinant Protein
Immunogen Species	Escherichia coli
Purity	Greater than 85% as determined by SDS-PAGE.
Sequence	MRRRNARGGISRTVSVYLDEDTNNRLIRAKDRSGRSKTIEVQIRLRDHLKRFDP FYNEEIFREVIEENESTFKEL
Research Area	Others
Source	E.coli
Target Names	traY
Protein Names	Recommended name: Relaxosome protein TraY
Expression Region	1-75aa
Notes	Repeated freezing and thawing is not recommended. Store working aliquots at 4°C for up to one week.
Tag Info	N-terminal 6xHis-KSI-tagged
Mol. Weight	24.4 kDa
Protein Length	Full Length

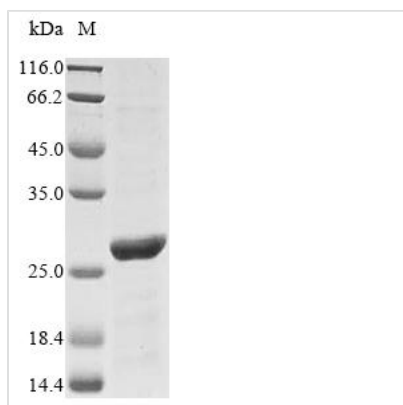
Image



Based on the SEQUEST from database of E.coli host and target protein, the LC-MS/MS Analysis result of CSB-EP319205ENL could indicate that this peptide derived from E.coli-expressed Escherichia coli traY.



Based on the SEQUEST from database of E.coli host and target protein, the LC-MS/MS Analysis result of CSB-EP319205ENL could indicate that this peptide derived from E.coli-expressed Escherichia coli traY.



(Tris-Glycine gel) Discontinuous SDS-PAGE (reduced) with 5% enrichment gel and 15% separation gel.

Reconstitution

We recommend that this vial be briefly centrifuged prior to opening to bring the contents to the bottom. Please reconstitute protein in deionized sterile water to a concentration of 0.1-1.0 mg/mL. We recommend to add 5-50% of glycerol (final concentration) and aliquot for long-term storage at $-20^{\circ}\text{C}/-80^{\circ}\text{C}$. Our default final concentration of glycerol is 50%. Customers could use it as reference.

Shelf Life

The shelf life is related to many factors, storage state, buffer ingredients, storage temperature and the stability of the protein itself. Generally, the shelf life of liquid form is 6 months at $-20^{\circ}\text{C}/-80^{\circ}\text{C}$. The shelf life of lyophilized form is 12 months at $-20^{\circ}\text{C}/-80^{\circ}\text{C}$.