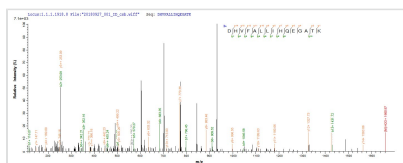




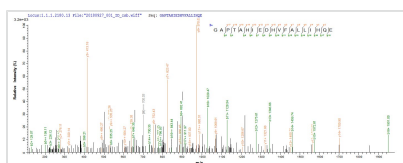
Recombinant Lentinula edodes Serine protease inhibitor

Product Code	CSB-EP305524LDV
Abbreviation	Recombinant Lentinula edodes Serine protease inhibitor protein
Storage	The shelf life is related to many factors, storage state, buffer ingredients, storage temperature and the stability of the protein itself. Generally, the shelf life of liquid form is 6 months at -20°C/-80°C. The shelf life of lyophilized form is 12 months at -20°C/-80°C.
Uniprot No.	P81639
Product Type	Recombinant Protein
Immunogen Species	Lentinula edodes (Shiitake mushroom) (Lentinus edodes)
Purity	Greater than 85% as determined by SDS-PAGE.
Sequence	SLETGRYLIHNGNNIVSRNLAEDRSLNPKRIVLLEPTDKIQLTWIEKSGDEYILN NRGAPTAHIEDHVFALLIHQEGATKWSIEAVPRHGRNAYIIKGS DGKGVVAPD KAGEQIIYRTLIVGPSEPPTFPLNQVFQIIKLE
Research Area	Others
Source	E.coli
Protein Names	Recommended name: Serine protease inhibitor
Expression Region	1-142aa
Notes	Repeated freezing and thawing is not recommended. Store working aliquots at 4°C for up to one week.
Tag Info	N-terminal 6xHis-tagged
Mol. Weight	20.0 kDa
Protein Length	Full Length

Image



Based on the SEQUEST from database of E.coli host and target protein, the LC-MS/MS Analysis result of CSB-EP305524LDV could indicate that this peptide derived from E.coli-expressed Lentinula edodes (Shiitake mushroom) (Lentinus edodes) N/A.



Based on the SEQUEST from database of E.coli host and target protein, the LC-MS/MS Analysis result of CSB-EP305524LDV could indicate that this peptide derived from E.coli-expressed Lentinula edodes (Shiitake mushroom) (Lentinus edodes) N/A.

Reconstitution

We recommend that this vial be briefly centrifuged prior to opening to bring the



contents to the bottom. Please reconstitute protein in deionized sterile water to a concentration of 0.1-1.0 mg/mL. We recommend to add 5-50% of glycerol (final concentration) and aliquot for long-term storage at -20°C/-80°C. Our default final concentration of glycerol is 50%. Customers could use it as reference.

Shelf Life

The shelf life is related to many factors, storage state, buffer ingredients, storage temperature and the stability of the protein itself.

Generally, the shelf life of liquid form is 6 months at -20°C/-80°C. The shelf life of lyophilized form is 12 months at -20°C/-80°C.