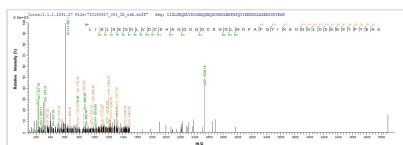




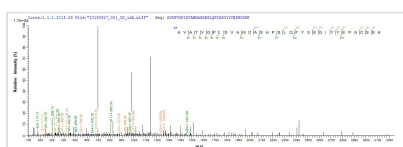
Recombinant Mouse Cathepsin L1 (CtSl1), partial

Product Code	CSB-EP006193MO
Abbreviation	Recombinant Mouse CtSl protein, partial
Storage	The shelf life is related to many factors, storage state, buffer ingredients, storage temperature and the stability of the protein itself. Generally, the shelf life of liquid form is 6 months at -20°C/-80°C. The shelf life of lyophilized form is 12 months at -20°C/-80°C.
Uniprot No.	P06797
Product Type	Recombinant Protein
Immunogen Species	Mus musculus (Mouse)
Purity	≥ 85% as determined by SDS-PAGE.
Sequence	IPKSVDWREKGCVTPVKNQGQCGSCWAFSASGCLEGQMFLKTGKLISLSEQN LVDCSHAQGNQGCNGGLMDFAFQYIKENGGLDSEESYPYEAKDGSCKYRAE FAVANDTGFVDIPQQEKALMKAVATVGPISVAMDASHPSLQFYSSGIYYEPNC SSKNLDHGVLLVGYGYEGT
Research Area	Signal Transduction
Source	E.coli
Target Names	CtSl
Protein Names	Recommended name: Cathepsin L1 EC= 3.4.22.15Alternative name(s): Major excreted protein Short name= MEP p39 cysteine proteinaseCleaved into the following 2 chains: 1. Cathepsin L1 heavy chain 2. Cathepsin L1 light chain
Expression Region	114-288aa
Notes	Repeated freezing and thawing is not recommended. Store working aliquots at 4°C for up to one week.
Tag Info	N-terminal 6xHis-taggedand C-terminal Myc-tagged
Mol. Weight	26.2 kDa
Protein Length	Partial

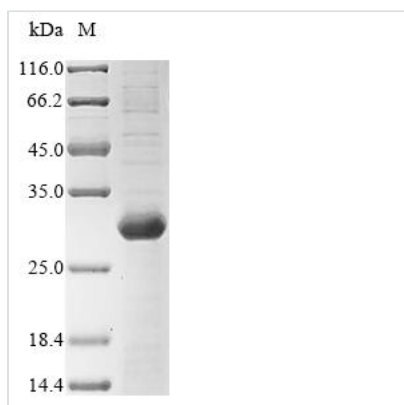
Image



Based on the SEQUEST from database of E.coli host and target protein, the LC-MS/MS Analysis result of CSB-EP006193MO could indicate that this peptide derived from E.coli-expressed Mus musculus (Mouse) CtSl.



Based on the SEQUEST from database of E.coli host and target protein, the LC-MS/MS Analysis result of CSB-EP006193MO could indicate that this peptide derived from E.coli-expressed Mus musculus (Mouse) CtSl.



(Tris-Glycine gel) Discontinuous SDS-PAGE (reduced) with 5% enrichment gel and 15% separation gel.

Reconstitution

We recommend that this vial be briefly centrifuged prior to opening to bring the contents to the bottom. Please reconstitute protein in deionized sterile water to a concentration of 0.1-1.0 mg/mL. We recommend to add 5-50% of glycerol (final concentration) and aliquot for long-term storage at -20°C/-80°C. Our default final concentration of glycerol is 50%. Customers could use it as reference.

Shelf Life

The shelf life is related to many factors, storage state, buffer ingredients, storage temperature and the stability of the protein itself. Generally, the shelf life of liquid form is 6 months at -20°C/-80°C. The shelf life of lyophilized form is 12 months at -20°C/-80°C.