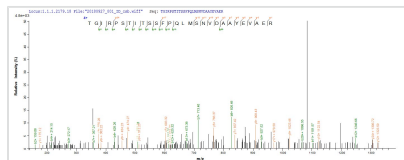




# Recombinant Human Matrix metalloproteinase-20 (MMP20)

<b>Product Code</b>	CSB-EP014667HU
<b>Abbreviation</b>	Recombinant Human MMP20 protein
<b>Storage</b>	The shelf life is related to many factors, storage state, buffer ingredients, storage temperature and the stability of the protein itself. Generally, the shelf life of liquid form is 6 months at -20°C/-80°C. The shelf life of lyophilized form is 12 months at -20°C/-80°C.
<b>Uniprot No.</b>	O60882
<b>Product Type</b>	Recombinant Protein
<b>Immunogen Species</b>	Homo sapiens (Human)
<b>Purity</b>	≥ 85% as determined by SDS-PAGE.
<b>Sequence</b>	YRLFPGEPKWKKNTLTYRISKYTPSMSSVEVDKAVEMALQAWSSAVPLSFVRI NSGEADIMISFENGHDHGDSYPFDGPRGTLAHAFAPGEGLGGDTHFDNAEKWT MGTNGFNLFTVAAHEFGHALGLAHSTDPALMYPTYKYKNPYGFHLPKDDVK GIQALYGPRKVFLGKPTLPHAPHHKPSIPDLCDSSSSFDAVTMLGKELLFKDR IFWRRQVHLRTGIRPSTITSSFPQLMSNVDAAYEVAERGTAFFKGPYHWITR GFQMQGPPRTIYDFGFPRHVQQIDAAYVLRPQKTLFFVGVDEYYSYDERKRK MEKDYPKNTTEEEFSGVNGQIDAAYELNGYIYFFSGPKTYKYDTEKEDVSVVK SSSWIGC
<b>Research Area</b>	Others
<b>Source</b>	E.coli
<b>Target Names</b>	MMP20
<b>Protein Names</b>	Recommended name: Matrix metalloproteinase-20 Short name= MMP-20 EC= 3.4.24.- Alternative name(s): Enamel metalloproteinase Enamelysin
<b>Expression Region</b>	108-483aa
<b>Notes</b>	Repeated freezing and thawing is not recommended. Store working aliquots at 4°C for up to one week.
<b>Tag Info</b>	N-terminal 10xHis-tagged and C-terminal Myc-tagged
<b>Mol. Weight</b>	47.6 kDa
<b>Protein Length</b>	Full Length of Mature Protein

## Image



Based on the SEQUEST from database of E.coli host and target protein, the LC-MS/MS Analysis result of CSB-EP014667HU could indicate that this peptide derived from E.coli-expressed Homo sapiens (Human) MMP20.

