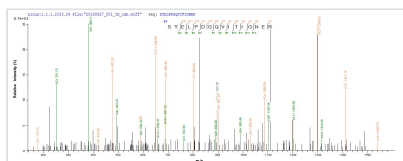




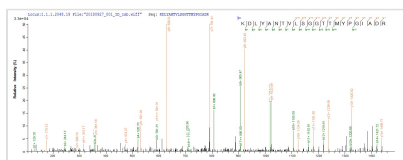
Recombinant Human Actin, cytoplasmic 1 (ACTB)

Product Code	CSB-EP001207HU
Abbreviation	Recombinant Human ACTB protein
Storage	The shelf life is related to many factors, storage state, buffer ingredients, storage temperature and the stability of the protein itself. Generally, the shelf life of liquid form is 6 months at -20°C/-80°C. The shelf life of lyophilized form is 12 months at -20°C/-80°C.
Uniprot No.	P60709
Product Type	Recombinant Protein
Immunogen Species	Homo sapiens (Human)
Purity	Greater than 85% as determined by SDS-PAGE.
Sequence	MDDDIAALVVDNGSGMCKAGFAGDDAPRAVFPISVGRPRHQGVMVGMGQKD SYVGDEAQSKRGILTLYPIEHGIVTNWDDMEKIWHHTFYNELRVAPEEHPVLL TEAPLNPKANREKMTQIMFETFNTPAMYVAIQAVLSLYASGRTTGIVMDSGDG VTHTVPIYEGYALPHAILRLDLAGRDLTDYLMKILTERGYSFTTTAEREIVRDIKE KLCYVALDFEQEMATAASSSSLEKSYELPDGQVITIGNERFRCPEALFQPSFLG MESCGIHETTFNSIMKCDVDIRKDLYANTVLSGGTTMYPGIADRMQKEITALAP STMKIKIIPPERKYSVWIGGSILASLSTFQQMWISKQEYDESGPSIVHRKCF
Research Area	Signal Transduction
Source	E.coli
Target Names	ACTB
Protein Names	Recommended name: Actin, cytoplasmic 1 Alternative name(s): Beta-actin Cleaved into the following chain: 1. Actin, cytoplasmic 1, N-terminally processed
Expression Region	1-375aa
Notes	Repeated freezing and thawing is not recommended. Store working aliquots at 4°C for up to one week.
Tag Info	N-terminal 10xHis-tagged and C-terminal Myc-tagged
Mol. Weight	49.2 kDa
Protein Length	Full Length

Image



Based on the SEQUEST from database of E.coli host and target protein, the LC-MS/MS Analysis result of CSB-EP001207HU could indicate that this peptide derived from E.coli-expressed Homo sapiens (Human) ACTB.



Based on the SEQUEST from database of E.coli host and target protein, the LC-MS/MS Analysis result of CSB-EP001207HU could indicate that this peptide derived from E.coli-expressed Homo sapiens (Human) ACTB.



Reconstitution

We recommend that this vial be briefly centrifuged prior to opening to bring the contents to the bottom. Please reconstitute protein in deionized sterile water to a concentration of 0.1-1.0 mg/mL. We recommend to add 5-50% of glycerol (final concentration) and aliquot for long-term storage at -20°C/-80°C. Our default final concentration of glycerol is 50%. Customers could use it as reference.

Shelf Life

The shelf life is related to many factors, storage state, buffer ingredients, storage temperature and the stability of the protein itself. Generally, the shelf life of liquid form is 6 months at -20°C/-80°C. The shelf life of lyophilized form is 12 months at -20°C/-80°C.