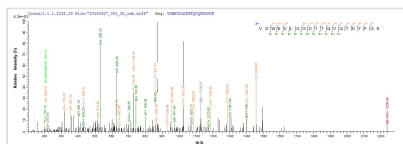




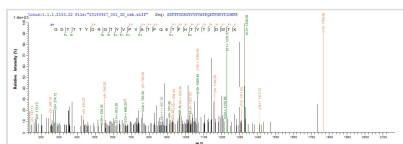
Recombinant *Neosartorya fumigata* Probable glycosidase crf1 (crf1), partial

| | |
|--------------------------|---|
| Product Code | CSB-EP818279NGS1 |
| Abbreviation | Recombinant <i>Neosartorya fumigata</i> crf1 protein, partial |
| Storage | The shelf life is related to many factors, storage state, buffer ingredients, storage temperature and the stability of the protein itself. Generally, the shelf life of liquid form is 6 months at -20°C/-80°C. The shelf life of lyophilized form is 12 months at -20°C/-80°C. |
| Uniprot No. | Q8J0P4 |
| Product Type | Recombinant Protein |
| Immunogen Species | <i>Neosartorya fumigata</i> (strain ATCC MYA-4609 / Af293 / CBS 101355 / FGSC A1100) (<i>Aspergillus fumigatus</i>) |
| Purity | ≥ 85% as determined by SDS-PAGE. |
| Sequence | TYTADFTSASALDQWEVTAGKVPVGPQGAEFTVAKQGDAPTIDTDFYFFFGKA EVMKAAPGTGVVSSIVLESDDLDEVDWEVLGGDTTQVQNTNYFGKGDTTTTYD RGTYVPVATPQETFHTYTIDWTKDAVTWSIDGAVVRTLTYNDAKGGTRFPQTP MRLRLGSWAGGDPSPKGTIEWAGGLTDYSAGPY |
| Research Area | Metabolism |
| Source | <i>E.coli</i> |
| Target Names | crf1 |
| Expression Region | 42-233aa |
| Notes | Repeated freezing and thawing is not recommended. Store working aliquots at 4°C for up to one week. |
| Tag Info | N-terminal 10xHis-tagged and C-terminal Myc-tagged |
| Mol. Weight | 28.1 kDa |
| Protein Length | Partial |

Image



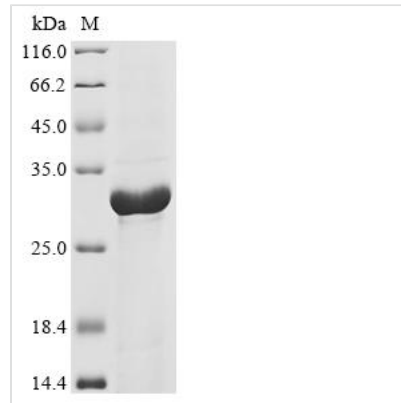
Based on the SEQUEST from database of *E.coli* host and target protein, the LC-MS/MS Analysis result of CSB-EP818279NGS1 could indicate that this peptide derived from *E.coli*-expressed *Neosartorya fumigata* (strain ATCC MYA-4609 / Af293 / CBS 101355 / FGSC A1100) (*Aspergillus fumigatus*) crf1.



Based on the SEQUEST from database of *E.coli* host and target protein, the LC-MS/MS Analysis result of CSB-EP818279NGS1 could indicate that this peptide derived from *E.coli*-expressed *Neosartorya fumigata* (strain ATCC MYA-4609 / Af293 / CBS 101355 / FGSC A1100) (*Aspergillus*



fumigatus) crf1.



(Tris-Glycine gel) Discontinuous SDS-PAGE (reduced) with 5% enrichment gel and 15% separation gel.

Reconstitution

We recommend that this vial be briefly centrifuged prior to opening to bring the contents to the bottom. Please reconstitute protein in deionized sterile water to a concentration of 0.1-1.0 mg/mL. We recommend to add 5-50% of glycerol (final concentration) and aliquot for long-term storage at -20°C/-80°C. Our default final concentration of glycerol is 50%. Customers could use it as reference.

Shelf Life

The shelf life is related to many factors, storage state, buffer ingredients, storage temperature and the stability of the protein itself. Generally, the shelf life of liquid form is 6 months at -20°C/-80°C. The shelf life of lyophilized form is 12 months at -20°C/-80°C.