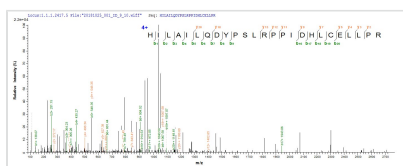




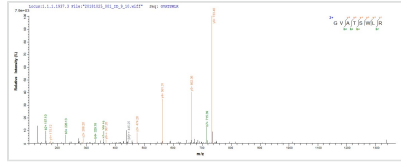
Recombinant Mouse NADPH--cytochrome P450 reductase (Por), partial

Product Code	CSB-EP018378MO
Abbreviation	Recombinant Mouse Por protein, partial
Storage	The shelf life is related to many factors, storage state, buffer ingredients, storage temperature and the stability of the protein itself. Generally, the shelf life of liquid form is 6 months at -20°C/-80°C. The shelf life of lyophilized form is 12 months at -20°C/-80°C.
Uniprot No.	P37040
Storage Buffer	Tris-based buffer,50% glycerol
Product Type	Recombinant Protein
Immunogen Species	Mus musculus (Mouse)
Purity	≥ 85% as determined by SDS-PAGE.
Sequence	<p> FDAKNPFLAAVTTNRKLNQGTERHLMHLELDISDSKIRYESGDHVAVYPANDS TLVNQIGEILGADLDVIMSLNNLDEESNKKHPFPCPTTYRTALTYLDITNPPRT NVLYELAQYASEPSEQEHLHKMASSSGEGKELYLSWVVEARRHILAILQDYPS LRPPIDHLCCELLPRLQARYYSIASSSKVHPNSVHICAVAVEYEAKSGRVNKGVA TSWLRTKEPAGENGRRALVPMFVRKSQFRLPFKPT </p>
Research Area	Signal Transduction
Source	E.coli
Target Names	Por
Protein Names	Recommended name: NADPH--cytochrome P450 reductase Short name= CPR Short name= P450R EC= 1.6.2.4
Expression Region	276-525aa
Notes	Repeated freezing and thawing is not recommended. Store working aliquots at 4°C for up to one week.
Tag Info	N-terminal 6xHis-tagged
Mol. Weight	34.2 kDa
Protein Length	Partial

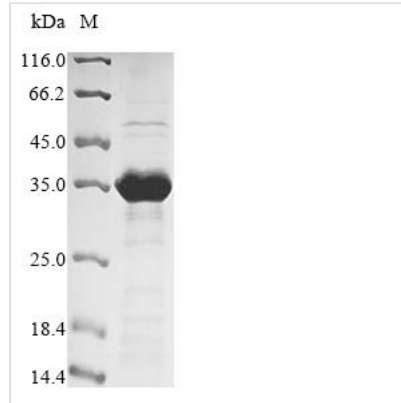
Image



Based on the SEQUEST from database of E.coli host and target protein, the LC-MS/MS Analysis result of CSB-EP018378MO could indicate that this peptide derived from E.coli-expressed Mus musculus (Mouse) Por.



Based on the SEQUEST from database of E.coli host and target protein, the LC-MS/MS Analysis result of CSB-EP018378MO could indicate that this peptide derived from E.coli-expressed *Mus musculus* (Mouse) Por.



(Tris-Glycine gel) Discontinuous SDS-PAGE (reduced) with 5% enrichment gel and 15% separation gel.

Reconstitution

We recommend that this vial be briefly centrifuged prior to opening to bring the contents to the bottom. Please reconstitute protein in deionized sterile water to a concentration of 0.1-1.0 mg/mL. We recommend to add 5-50% of glycerol (final concentration) and aliquot for long-term storage at -20°C/-80°C. Our default final concentration of glycerol is 50%. Customers could use it as reference.

Shelf Life

The shelf life is related to many factors, storage state, buffer ingredients, storage temperature and the stability of the protein itself. Generally, the shelf life of liquid form is 6 months at -20°C/-80°C. The shelf life of lyophilized form is 12 months at -20°C/-80°C.