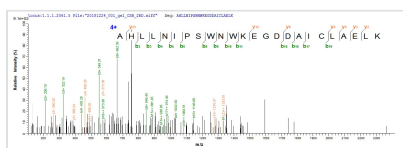




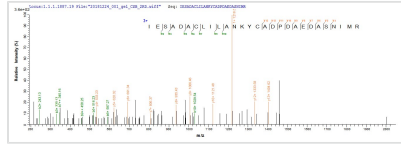
Recombinant Human Calcium-activated potassium channel subunit alpha-1 (KCNMA1), partial

Product Code	CSB-EP614255HU
Abbreviation	Recombinant Human KCNMA1 protein, partial
Storage	The shelf life is related to many factors, storage state, buffer ingredients, storage temperature and the stability of the protein itself. Generally, the shelf life of liquid form is 6 months at -20°C/-80°C. The shelf life of lyophilized form is 12 months at -20°C/-80°C.
Uniprot No.	Q12791
Storage Buffer	Tris-based buffer,50% glycerol
Product Type	Recombinant Protein
Immunogen Species	Homo sapiens (Human)
Purity	≥ 85% as determined by SDS-PAGE.
Sequence	VVCGHITLESVSNFLKDFLHKDRDDVNVEIVFLHNISP NLELEALFKRHFTQVEF YQGSVLNPHDLARVKIESADACLILANKYCADPDAEDASNIMRVISIKNYHPKIRI ITQMLQYHNKAHLLNIPSWNWKEGDDAICLAELKLG FIA
Research Area	Cancer
Source	E.coli
Target Names	KCNMA1
Protein Names	Recommended name: Calcium-activated potassium channel subunit alpha-1 Alternative name(s): BK channel BKCA alpha Calcium-activated potassium channel, subfamily M subunit alpha-1 K(VCA)alpha KCa1.1 Maxi K channel Short name=
Expression Region	411-560aa
Notes	Repeated freezing and thawing is not recommended. Store working aliquots at 4°C for up to one week.
Tag Info	C-terminal 6xHis-HPC4-tagged
Mol. Weight	20.0 kDa
Protein Length	Partial

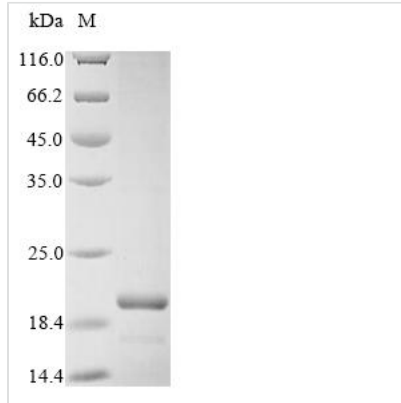
Image



Based on the SEQUEST from database of E.coli host and target protein, the LC-MS/MS Analysis result of CSB-EP614255HU could indicate that this peptide derived from E.coli-expressed Homo sapiens (Human) KCNMA1.



Based on the SEQUEST from database of E.coli host and target protein, the LC-MS/MS Analysis result of CSB-EP614255HU could indicate that this peptide derived from E.coli-expressed Homo sapiens (Human) KCNMA1.



(Tris-Glycine gel) Discontinuous SDS-PAGE (reduced) with 5% enrichment gel and 15% separation gel.

Reconstitution

We recommend that this vial be briefly centrifuged prior to opening to bring the contents to the bottom. Please reconstitute protein in deionized sterile water to a concentration of 0.1-1.0 mg/mL. We recommend to add 5-50% of glycerol (final concentration) and aliquot for long-term storage at -20°C/-80°C. Our default final concentration of glycerol is 50%. Customers could use it as reference.

Shelf Life

The shelf life is related to many factors, storage state, buffer ingredients, storage temperature and the stability of the protein itself. Generally, the shelf life of liquid form is 6 months at -20°C/-80°C. The shelf life of lyophilized form is 12 months at -20°C/-80°C.