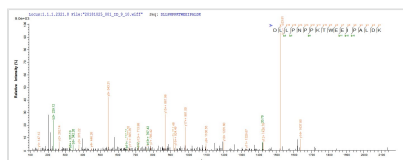




Recombinant Escherichia coli Maltose-binding periplasmic protein (malE)

Product Code	CSB-EP360183ENV
Abbreviation	Recombinant E.coli malE protein
Storage	The shelf life is related to many factors, storage state, buffer ingredients, storage temperature and the stability of the protein itself. Generally, the shelf life of liquid form is 6 months at -20°C/-80°C. The shelf life of lyophilized form is 12 months at -20°C/-80°C.
Uniprot No.	P0AEX9
Storage Buffer	Tris-based buffer,50% glycerol
Product Type	Recombinant Protein
Immunogen Species	Escherichia coli (strain K12)
Purity	Greater than 90% as determined by SDS-PAGE.
Sequence	KIEEGKLVWINGDKGYNGLAEVGGKFEKDTGIKVTVEHPDKLEEKFPQVAATG DGPDIIFWAHDRFGGYAQSGLLAEITPDKAFQDKLYPFTWDAVRYNGKLIAYPI AVEALSLIYNKDLLPNPPKTWEEIPALDKELKAKGKSALMFNLQEPYFTWPLIAA DGGYAFKYENKDYDIKDVGVNAGAKAGLTFVLVDLIKXHMNADTDYSIAEAA FNKGETAMTINGPWAWSNIDTSKVNYGVTVLPTFKGQPSKPFVGVLSAGINAA SPNKELAKEFLENYLLTDEGLEAVNKDKPLGAVALKSYYEELAKDPRIAATMEN AQKGEIMPNIQMSAFWYAVRTAVINAASGRQTVDEALKDAQTRITK
Research Area	Tags & Cell Markers
Source	E.coli
Target Names	malE
Protein Names	Recommended name: Maltose-binding periplasmic protein Alternative name(s): MBP MMBP Maltodextrin-binding protein
Expression Region	27-396aa
Notes	Repeated freezing and thawing is not recommended. Store working aliquots at 4°C for up to one week.
Tag Info	N-terminal 10xHis-tagged and C-terminal Myc-tagged
Mol. Weight	48.2 kDa
Protein Length	Full Length of Mature Protein

Image



Based on the SEQUEST from database of E.coli host and target protein, the LC-MS/MS Analysis result of CSB-EP360183ENV could indicate that this peptide derived from E.coli-expressed Escherichia coli (strain K12) malE.

