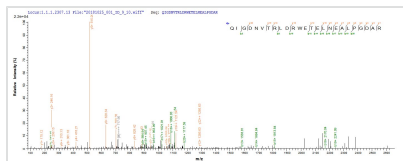




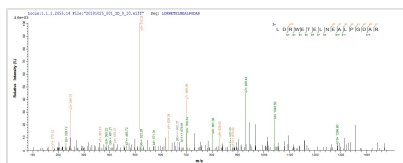
Recombinant *Klebsiella pneumoniae* Beta-lactamase SHV-5 (bla)

Product Code	CSB-EP358390KBG
Abbreviation	Recombinant <i>Klebsiella pneumoniae</i> bla protein
Storage	The shelf life is related to many factors, storage state, buffer ingredients, storage temperature and the stability of the protein itself. Generally, the shelf life of liquid form is 6 months at -20°C/-80°C. The shelf life of lyophilized form is 12 months at -20°C/-80°C.
Uniprot No.	P0A3M1
Product Type	Recombinant Protein
Immunogen Species	<i>Klebsiella pneumoniae</i>
Purity	≥ 90% as determined by SDS-PAGE.
Sequence	SPQPLEQIKLSESQLSGRVGMIEMDLASGRTLAWRADERFPMMSTFKVVLGAVLARVDAGDEQLERKIHRYQQDLVDYSPVSEKHLADGMTVGELCAAITMSDNSAANLLLATVGGPAGLTAFLRQIGDNVTRLDRWETELNEALPGDARDTTTPASMAATLRKLLTSQRLSARSQRQLLQWMVDDR VAGPLIRSVLPAGWFIADKTGASKRGARGIVALLGPNKAERIVVIYLRDTPASMAERNQQIAGIGAALIEHWQR
Research Area	Epigenetics and Nuclear Signaling
Source	E.coli
Target Names	bla
Protein Names	Recommended name: Beta-lactamase SHV-5 EC= 3.5.2.6
Expression Region	22-286aa
Notes	Repeated freezing and thawing is not recommended. Store working aliquots at 4°C for up to one week.
Tag Info	N-terminal 10xHis-tagged and C-terminal Myc-tagged
Mol. Weight	36.3 kDa
Protein Length	Full Length of Mature Protein

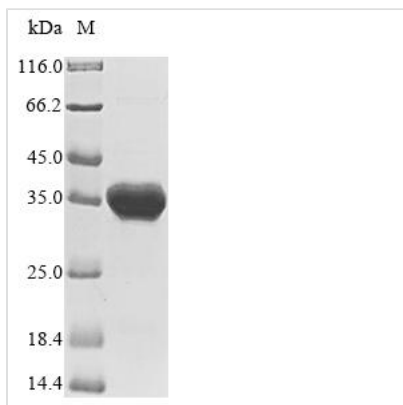
Image



Based on the SEQUEST from database of E.coli host and target protein, the LC-MS/MS Analysis result of CSB-EP358390KBG could indicate that this peptide derived from E.coli-expressed *Klebsiella pneumoniae* bla.



Based on the SEQUEST from database of E.coli host and target protein, the LC-MS/MS Analysis result of CSB-EP358390KBG could indicate that this peptide derived from E.coli-expressed *Klebsiella pneumoniae* bla.



(Tris-Glycine gel) Discontinuous SDS-PAGE (reduced) with 5% enrichment gel and 15% separation gel.

Reconstitution

We recommend that this vial be briefly centrifuged prior to opening to bring the contents to the bottom. Please reconstitute protein in deionized sterile water to a concentration of 0.1-1.0 mg/mL. We recommend to add 5-50% of glycerol (final concentration) and aliquot for long-term storage at -20°C/-80°C. Our default final concentration of glycerol is 50%. Customers could use it as reference.

Shelf Life

The shelf life is related to many factors, storage state, buffer ingredients, storage temperature and the stability of the protein itself. Generally, the shelf life of liquid form is 6 months at -20°C/-80°C. The shelf life of lyophilized form is 12 months at -20°C/-80°C.