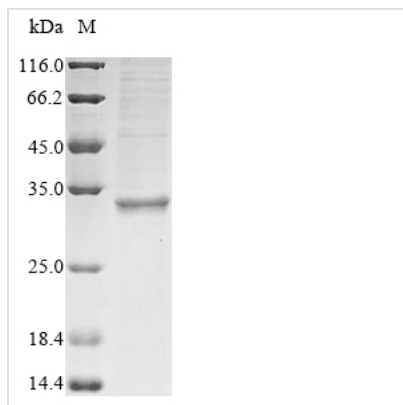


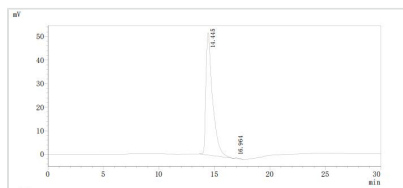


Recombinant Lymphocytic choriomeningitis virus Pre-glycoprotein polyprotein GP complex (GPC), partial

Product Code	CSB-BP362127LKZ1
Abbreviation	Recombinant Lymphocytic choriomeningitis virus GPC protein, partial
Storage	The shelf life is related to many factors, storage state, buffer ingredients, storage temperature and the stability of the protein itself. Generally, the shelf life of liquid form is 6 months at -20°C/-80°C. The shelf life of lyophilized form is 12 months at -20°C/-80°C.
Uniprot No.	P07399
Product Type	Recombinant Proteins
Immunogen Species	Lymphocytic choriomeningitis virus (strain WE) (LCMV)
Purity	Greater than 90% as determined by SDS-PAGE. Greater than 95% as determined by SEC-HPLC.
Sequence	MYGLNGPDIYKGVYQFKSVEFDMSHLNLTMPNACSVNNSHHYISMGSSGLEP TFTNDSILNHNFCNLTSALNKKSFDHTLMSIVSSLHLSIRGNSNYKAVSCDFNN GITIQYNLSSSDPQSAMSQCRTFRGRVLD MFRTAFGGKYMRSGWGWGTGSDG KTTWCSQTSYQYLIIQNRTWENHCRYAGPFGMSRILFAQEKTKFLTRRLS
Research Area	Signal Transduction
Source	Baculovirus
Target Names	GPC
Protein Names	Recommended name: Pre-glycoprotein polyprotein GP complex Short name= Pre-GP-CCleaved into the following 3 chains: 1. Stable signal peptide Short name= 2. SSP 3. Glycoprotein G1 Short name= 4. GP1 5. Glycoprotein G2
Expression Region	59-265aa
Notes	Repeated freezing and thawing is not recommended. Store working aliquots at 4°C for up to one week.
Tag Info	N-terminal 10xHis-tagged and C-terminal Myc-tagged
Mol. Weight	27.4 kDa
Protein Length	Partial
Image	



(Tris-Glycine gel) Discontinuous SDS-PAGE (reduced) with 5% enrichment gel and 15% separation gel.



The purity of GPC was greater than 95% as determined by SEC-HPLC

Shelf Life

The shelf life is related to many factors, storage state, buffer ingredients, storage temperature and the stability of the protein itself.

Generally, the shelf life of liquid form is 6 months at -20°C/-80°C. The shelf life of lyophilized form is 12 months at -20°C/-80°C.