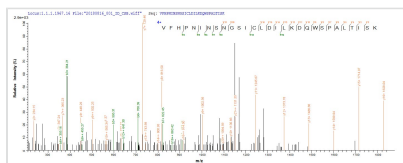




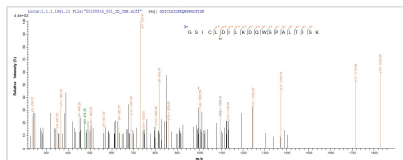
# Recombinant *Oryza sativa* subsp. japonica Ubiquitin-conjugating enzyme E2 5A (UBC5A)

<b>Product Code</b>	CSB-EP848293OFG
<b>Abbreviation</b>	Recombinant <i>Oryza sativa</i> subsp. japonica UBC5A protein
<b>Storage</b>	The shelf life is related to many factors, storage state, buffer ingredients, storage temperature and the stability of the protein itself. Generally, the shelf life of liquid form is 6 months at -20°C/-80°C. The shelf life of lyophilized form is 12 months at -20°C/-80°C.
<b>Uniprot No.</b>	Q8S920
<b>Product Type</b>	Recombinant Protein
<b>Immunogen Species</b>	<i>Oryza sativa</i> subsp. japonica (Rice)
<b>Purity</b>	Greater than 85% as determined by SDS-PAGE.
<b>Sequence</b>	MASKRIQKELKDLQKDPPTSCSAGPVGEDMFHWQATIMGPSDSPYAGGVFLV TIHFPPDYPFKPPKVAFRTKVFHPNINSNGSICLDILKDQWSPALTISKVLLSICS LLTDPNPDDPLVPEIAHMYKTDRHKYENTARTWTQRYAM
<b>Research Area</b>	Cell Biology
<b>Source</b>	<i>E.coli</i>
<b>Target Names</b>	UBC5A
<b>Protein Names</b>	Recommended name: Ubiquitin-conjugating enzyme E2 5A EC= 6.3.2.19 Alternative name(s): Ubiquitin carrier protein 5a Short name= OsUBC5a Ubiquitin-protein ligase 5A
<b>Expression Region</b>	1-147aa
<b>Notes</b>	Repeated freezing and thawing is not recommended. Store working aliquots at 4°C for up to one week.
<b>Tag Info</b>	N-terminal 10xHis-tagged and C-terminal Myc-tagged
<b>Mol. Weight</b>	23.6 kDa
<b>Protein Length</b>	Full Length

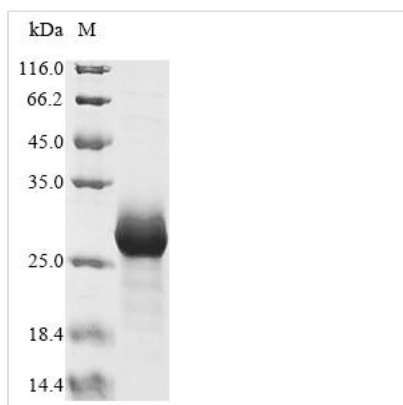
## Image



Based on the SEQUEST from database of *E.coli* host and target protein, the LC-MS/MS Analysis result of CSB-EP848293OFG could indicate that this peptide derived from *E.coli*-expressed *Oryza sativa* subsp. japonica (Rice) UBC5A.



Based on the SEQUEST from database of *E.coli* host and target protein, the LC-MS/MS Analysis result of CSB-EP848293OFG could indicate that this peptide derived from *E.coli*-expressed *Oryza sativa* subsp. japonica (Rice) UBC5A.



(Tris-Glycine gel) Discontinuous SDS-PAGE (reduced) with 5% enrichment gel and 15% separation gel.

### Reconstitution

We recommend that this vial be briefly centrifuged prior to opening to bring the contents to the bottom. Please reconstitute protein in deionized sterile water to a concentration of 0.1-1.0 mg/mL. We recommend to add 5-50% of glycerol (final concentration) and aliquot for long-term storage at -20°C/-80°C. Our default final concentration of glycerol is 50%. Customers could use it as reference.

### Shelf Life

The shelf life is related to many factors, storage state, buffer ingredients, storage temperature and the stability of the protein itself. Generally, the shelf life of liquid form is 6 months at -20°C/-80°C. The shelf life of lyophilized form is 12 months at -20°C/-80°C.