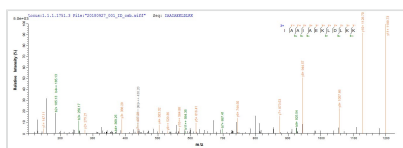




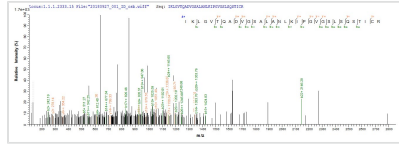
Recombinant Human POU domain, class 4, transcription factor 2 (POU4F2)

Product Code	CSB-EP622514HU
Abbreviation	Recombinant Human POU4F2 protein
Storage	The shelf life is related to many factors, storage state, buffer ingredients, storage temperature and the stability of the protein itself. Generally, the shelf life of liquid form is 6 months at -20°C/-80°C. The shelf life of lyophilized form is 12 months at -20°C/-80°C.
Uniprot No.	Q12837
Product Type	Recombinant Protein
Immunogen Species	Homo sapiens (Human)
Purity	≥ 85% as determined by SDS-PAGE.
Sequence	MNTIPCTSAASSSSVPIHPSALAGTHHHHHHHHHHHHHQPHQALEGELLEHLS PGLALGAMAGPDGAVVSTPAHAPHMATMNPMPHQAALSMHAHGLPSHMGC MSDVDADPRDLEAFAERFKQRRIKLGVTQADVGSALANLKIPGVGSLSQSTIC RFESLTLSHNNMIALKPILQAWLEEAEKSHREKLTKPELFNGAEKKRKRTSIAA PEKRSLEAYFAIQPRPSSEKIAAIAEKLDLKNVVRVWFCNQKQKQKRMKYSAGI
Research Area	Others
Source	E.coli
Target Names	POU4F2
Protein Names	Recommended name: POU domain, class 4, transcription factor 2 Alternative name(s): Brain-specific homeobox/POU domain protein 3B Short name= Brain-3B Short name= Brn-3B
Expression Region	1-265aa
Notes	Repeated freezing and thawing is not recommended. Store working aliquots at 4°C for up to one week.
Tag Info	N-terminal 10xHis-tagged and C-terminal Myc-tagged
Mol. Weight	36.0 kDa
Protein Length	Full Length of Isoform 2

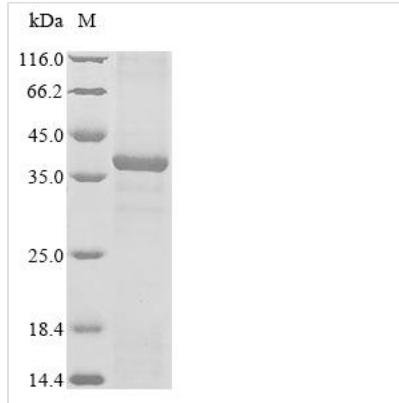
Image



Based on the SEQUEST from database of E.coli host and target protein, the LC-MS/MS Analysis result of CSB-EP622514HU could indicate that this peptide derived from E.coli-expressed Homo sapiens (Human) POU4F2.



Based on the SEQUEST from database of E.coli host and target protein, the LC-MS/MS Analysis result of CSB-EP622514HU could indicate that this peptide derived from E.coli-expressed Homo sapiens (Human) POU4F2.



(Tris-Glycine gel) Discontinuous SDS-PAGE (reduced) with 5% enrichment gel and 15% separation gel.

Reconstitution

We recommend that this vial be briefly centrifuged prior to opening to bring the contents to the bottom. Please reconstitute protein in deionized sterile water to a concentration of 0.1-1.0 mg/mL. We recommend to add 5-50% of glycerol (final concentration) and aliquot for long-term storage at -20°C/-80°C. Our default final concentration of glycerol is 50%. Customers could use it as reference.

Shelf Life

The shelf life is related to many factors, storage state, buffer ingredients, storage temperature and the stability of the protein itself. Generally, the shelf life of liquid form is 6 months at -20°C/-80°C. The shelf life of lyophilized form is 12 months at -20°C/-80°C.