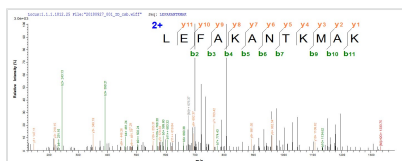




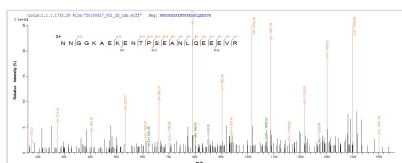
# Recombinant Human RNA-binding protein with multiple splicing (RBPMS)

<b>Product Code</b>	CSB-EP821892HU
<b>Abbreviation</b>	Recombinant Human RBPMS protein
<b>Storage</b>	The shelf life is related to many factors, storage state, buffer ingredients, storage temperature and the stability of the protein itself. Generally, the shelf life of liquid form is 6 months at -20°C/-80°C. The shelf life of lyophilized form is 12 months at -20°C/-80°C.
<b>Uniprot No.</b>	Q93062
<b>Product Type</b>	Recombinant Protein
<b>Immunogen Species</b>	Homo sapiens (Human)
<b>Purity</b>	Greater than 85% as determined by SDS-PAGE.
<b>Sequence</b>	MNNGGKAEKENTPSEANLQEEEVRTLFSGLPLDIKPRELYLLFRPFKGYEGS LIKLTSKQPVGFVSFDRSEAEAAKNALNGIRFDPEIPQTLRLEFAKANTKMAK NKLVGTPNPSTPLPNTVPQFIAREPYELTVPALYPSSPEVWAPYPLYPaelAPA LPPPAFTYPASLHAQMRWLPPSEATSQGWKSRQFC
<b>Research Area</b>	Epigenetics and Nuclear Signaling
<b>Source</b>	E.coli
<b>Target Names</b>	RBPMS
<b>Protein Names</b>	Recommended name: RNA-binding protein with multiple splicing Short name= RBP-MS Alternative name(s): Heart and RRM expressed sequence Short name= Hermes
<b>Expression Region</b>	1-196aa
<b>Notes</b>	Repeated freezing and thawing is not recommended. Store working aliquots at 4°C for up to one week.
<b>Tag Info</b>	N-terminal 10xHis-tagged and C-terminal Myc-tagged
<b>Mol. Weight</b>	28.8 kDa
<b>Protein Length</b>	Full Length

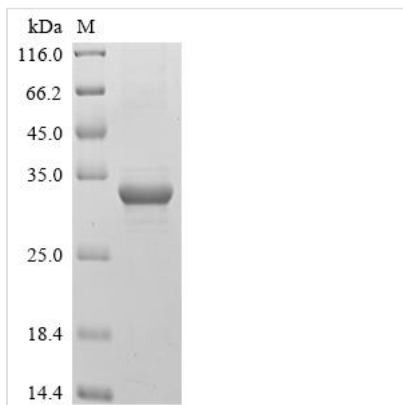
## Image



Based on the SEQUEST from database of E.coli host and target protein, the LC-MS/MS Analysis result of CSB-EP821892HU could indicate that this peptide derived from E.coli-expressed Homo sapiens (Human) RBPMS.



Based on the SEQUEST from database of E.coli host and target protein, the LC-MS/MS Analysis result of CSB-EP821892HU could indicate that this peptide derived from E.coli-expressed Homo sapiens (Human) RBPMS.



(Tris-Glycine gel) Discontinuous SDS-PAGE (reduced) with 5% enrichment gel and 15% separation gel.

### Reconstitution

We recommend that this vial be briefly centrifuged prior to opening to bring the contents to the bottom. Please reconstitute protein in deionized sterile water to a concentration of 0.1-1.0 mg/mL. We recommend to add 5-50% of glycerol (final concentration) and aliquot for long-term storage at -20°C/-80°C. Our default final concentration of glycerol is 50%. Customers could use it as reference.

### Shelf Life

The shelf life is related to many factors, storage state, buffer ingredients, storage temperature and the stability of the protein itself. Generally, the shelf life of liquid form is 6 months at -20°C/-80°C. The shelf life of lyophilized form is 12 months at -20°C/-80°C.