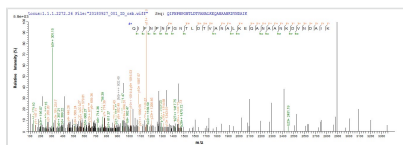




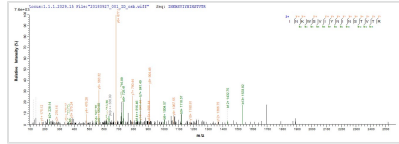
Recombinant *Pseudomonas aeruginosa* Type III needle protein PscF (pscF)

Product Code	CSB-EP310982EZ X
Abbreviation	Recombinant <i>Pseudomonas aeruginosa</i> pscF protein
Storage	The shelf life is related to many factors, storage state, buffer ingredients, storage temperature and the stability of the protein itself. Generally, the shelf life of liquid form is 6 months at -20°C/-80°C. The shelf life of lyophilized form is 12 months at -20°C/-80°C.
Uniprot No.	P95434
Storage Buffer	Tris-based buffer,50% glycerol
Product Type	Recombinant Proteins
Immunogen Species	<i>Pseudomonas aeruginosa</i> (strain ATCC 15692 / DSM 22644 / CIP 104116 / JCM 14847 / LMG 12228 / 1C / PRS 101 / PAO1)
Purity	Greater than 85% as determined by SDS-PAGE.
Sequence	AQIFNPNPGNTLDTVANALKEQANAANKDVNDAIKALQGTDNADNPALLAELQ HKINKWSVIYNINSTVTRALRDLMQGILQKI
Research Area	Others
Source	E.coli
Target Names	pscF
Protein Names	Recommended name: Type III needle protein pscF Alternative name(s): <i>Pseudomonas</i> secretion protein F
Expression Region	2-85aa
Notes	Repeated freezing and thawing is not recommended. Store working aliquots at 4°C for up to one week.
Tag Info	N-terminal 10xHis-tagged and C-terminal Myc-tagged
Mol. Weight	16.6 kDa
Protein Length	Full Length of Mature Protein

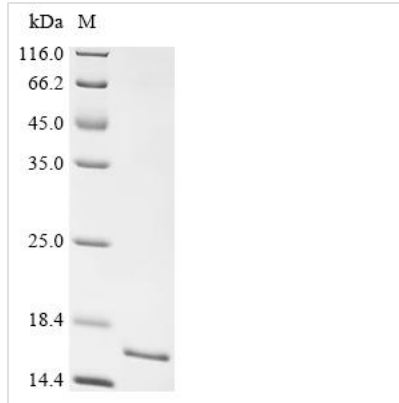
Image



Based on the SEQUEST from database of E.coli host and target protein, the LC-MS/MS Analysis result of CSB-EP310982EZ X could indicate that this peptide derived from E.coli-expressed *Pseudomonas aeruginosa* (strain ATCC 15692 / DSM 22644 / CIP 104116 / JCM 14847 / LMG 12228 / 1C / PRS 101 / PAO1) pscF.



Based on the SEQUEST from database of E.coli host and target protein, the LC-MS/MS Analysis result of CSB-EP310982EZC could indicate that this peptide derived from E.coli-expressed *Pseudomonas aeruginosa* (strain ATCC 15692 / DSM 22644 / CIP 104116 / JCM 14847 / LMG 12228 / 1C / PRS 101 / PAO1) pscF.



(Tris-Glycine gel) Discontinuous SDS-PAGE (reduced) with 5% enrichment gel and 15% separation gel.

Shelf Life

The shelf life is related to many factors, storage state, buffer ingredients, storage temperature and the stability of the protein itself.

Generally, the shelf life of liquid form is 6 months at -20°C/-80°C. The shelf life of lyophilized form is 12 months at -20°C/-80°C.