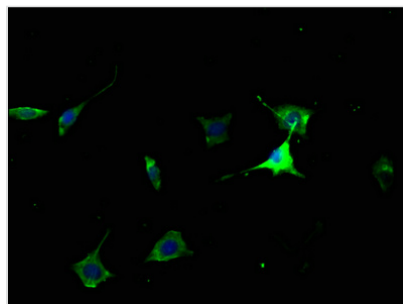




CHRM2 Antibody

Product Code	CSB-PA005382PA01HU
Storage	Upon receipt, store at -20°C or -80°C. Avoid repeated freeze.
Uniprot No.	P08172
Immunogen	Peptide sequence from Human Muscarinic acetylcholine receptor M2 protein (3-20AA)
Raised In	Rabbit
Species Reactivity	Human
Tested Applications	ELISA, IF; Recommended dilution: IF:1:50-1:200
Form	Liquid
Conjugate	Non-conjugated
Storage Buffer	Preservative: 0.03% Proclin 300 Constituents: 50% Glycerol, 0.01M PBS, pH 7.4
Purification Method	Antigen Affinity Purified
Isotype	IgG
Clonality	Polyclonal
Alias	Muscarinic acetylcholine receptor M2, CHRM2
Immunogen Species	Homo sapiens (Human)
Research Area	Neuroscience
Target Names	CHRM2

Image



Immunofluorescence staining of SH-SY5Y cells with CSB-PA005382PA01HU at 1:50, counterstained with DAPI. The cells were fixed in 4% formaldehyde, permeabilized using 0.2% Triton X-100 and blocked in 10% normal Goat Serum. The cells were then incubated with the antibody overnight at 4°C. The secondary antibody was Alexa Fluor 488-conjugated AffiniPure Goat Anti-Rabbit IgG(H+L).

Usage

For Research Use Only. Not for use in diagnostic or therapeutic procedures.