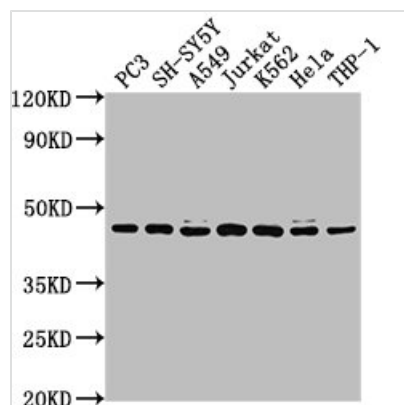




CSNK2A3 Antibody

Product Code	CSB-PA086427LA01HU
Storage	Upon receipt, store at -20°C or -80°C. Avoid repeated freeze.
Uniprot No.	Q8NEV1
Immunogen	Recombinant Human Casein kinase II subunit alpha 3 protein (151-391AA)
Raised In	Rabbit
Species Reactivity	Human
Tested Applications	ELISA, WB, IHC, IP; Recommended dilution: WB:1:1000-1:5000, IHC:1:200-1:500, IP:1:200-1:2000
Form	Liquid
Conjugate	Non-conjugated
Storage Buffer	Preservative: 0.03% Proclin 300 Constituents: 50% Glycerol, 0.01M PBS, pH 7.4
Purification Method	>95%, Protein G purified
Isotype	IgG
Clonality	Polyclonal
Alias	Casein kinase II subunit alpha 3 (CK II alpha 3) (EC 2.7.11.1) (Casein kinase II alpha 1 polypeptide pseudogene), CSNK2A3, CSNK2A1P
Immunogen Species	Homo sapiens (Human)
Research Area	Others
Target Names	CSNK2A3

Image



Western Blot

Positive WB detected in: PC3 whole cell lysate, SH-SY5Y whole cell lysate, A549 whole cell lysate, Jurkat whole cell lysate, K562 whole cell lysate, HeLa whole cell lysate, THP-1 whole cell lysate

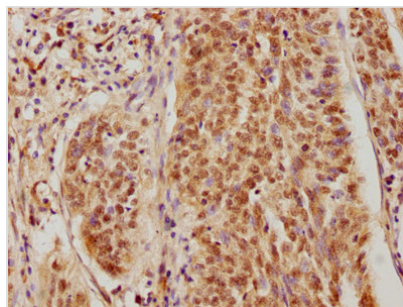
All lanes: CSNK2A3 antibody at 1:2000

Secondary

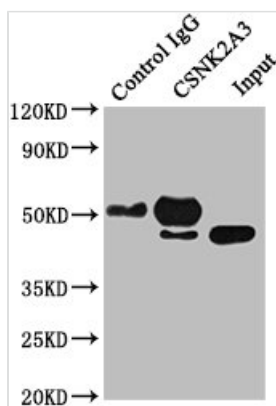
Goat polyclonal to rabbit IgG at 1/50000 dilution

Predicted band size: 46 kDa

Observed band size: 46 kDa



IHC image of CSB-PA086427LA01HU diluted at 1:400 and staining in paraffin-embedded human cervical cancer performed on a Leica Bond™ system. After dewaxing and hydration, antigen retrieval was mediated by high pressure in a citrate buffer (pH 6.0). Section was blocked with 10% normal goat serum 30min at RT. Then primary antibody (1% BSA) was incubated at 4°C overnight. The primary is detected by a biotinylated secondary antibody and visualized using an HRP conjugated SP system.



Immunoprecipitating CSNK2A3 in HeLa whole cell lysate

Lane 1: Rabbit control IgG instead of CSB-PA086427LA01HU in HeLa whole cell lysate. For western blotting, a HRP-conjugated Protein G antibody was used as the secondary antibody (1/50000)

Lane 2: CSB-PA086427LA01HU (5μg) + HeLa whole cell lysate (0.5mg)

Lane 3: HeLa whole cell lysate (20μg)