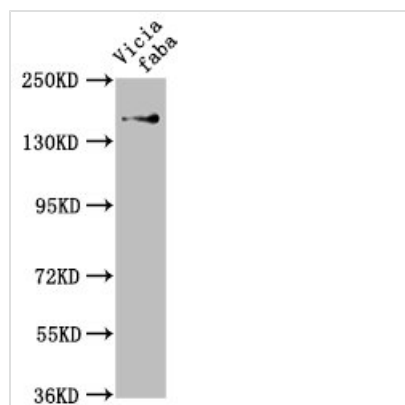




# GLU1 Antibody

<b>Product Code</b>	CSB-PA24649A0Rb
<b>Storage</b>	Upon receipt, store at -20°C or -80°C. Avoid repeated freeze.
<b>Uniprot No.</b>	Q9ZNZ7
<b>Immunogen</b>	Recombinant Arabidopsis thaliana Ferredoxin-dependent glutamate synthase 1, chloroplastic/mitochondrial protein (106-505AA)
<b>Raised In</b>	Rabbit
<b>Species Reactivity</b>	Arabidopsis thaliana
<b>Tested Applications</b>	ELISA, WB; Recommended dilution: WB:1:500-1:2000
<b>Form</b>	Liquid
<b>Conjugate</b>	Non-conjugated
<b>Storage Buffer</b>	Preservative: 0.03% Proclin 300 Constituents: 50% Glycerol, 0.01M PBS, pH 7.4
<b>Purification Method</b>	>95%, Protein G purified
<b>Isotype</b>	IgG
<b>Clonality</b>	Polyclonal
<b>Alias</b>	Ferredoxin-dependent glutamate synthase 1, chloroplastic/mitochondrial (EC 1.4.7.1) (Fd-GOGAT 1), GLU1, GLS1
<b>Immunogen Species</b>	Arabidopsis thaliana
<b>Research Area</b>	Others
<b>Target Names</b>	GLU1

## Image



### Western Blot

Positive WB detected in: Vicia faba leaf tissue

All lanes: GLU1 antibody at 1:1000

Secondary

Goat polyclonal to rabbit IgG at 1/50000 dilution

Predicted band size: 177, 180 kDa

Observed band size: 177 kDa