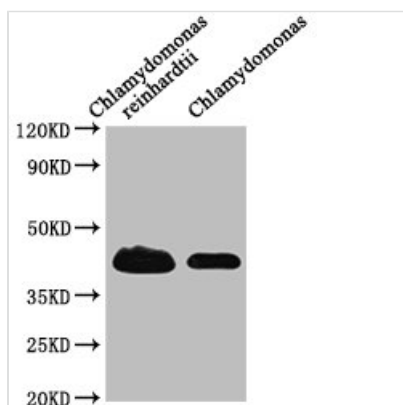




# RB38 Antibody

|                            |  |
|----------------------------|--|
| <b>Product Code</b>        | CSB-PA24729A0Rb  |
| <b>Storage</b>             | Upon receipt, store at -20°C or -80°C. Avoid repeated freeze.                    |
| <b>Uniprot No.</b>         | Q6EMK7   |
| <b>Immunogen</b>           | Recombinant Chlamydomonas reinhardtii 38 kDa RNA-binding protein (1-382AA)       |
| <b>Raised In</b>           | Rabbit   |
| <b>Species Reactivity</b>  | Chlamydomonas reinhardtii  |
| <b>Tested Applications</b> | ELISA, WB; Recommended dilution: WB:1:500-1:2000                                 |
| <b>Form</b>                | Liquid   |
| <b>Conjugate</b>           | Non-conjugated   |
| <b>Storage Buffer</b>      | Preservative: 0.03% Proclin 300<br>Constituents: 50% Glycerol, 0.01M PBS, pH 7.4 |
| <b>Purification Method</b> | >95%, Protein G purified   |
| <b>Isotype</b>             | IgG  |
| <b>Clonality</b>           | Polyclonal   |
| <b>Alias</b>               | RB38   |
| <b>Immunogen Species</b>   | Chlamydomonas reinhardtii  |
| <b>Research Area</b>       | Others   |
| <b>Target Names</b>        | RB38   |

## Image



### Western Blot

Positive WB detected in: Chlamydomonas reinhardtii tissue, Chlamydomonas tissue

All lanes: RB38 antibody at 1:1000

Secondary

Goat polyclonal to rabbit IgG at 1/50000 dilution

Predicted band size: 45 kDa

Observed band size: 45 kDa

## Usage

For Research Use Only. Not for use in diagnostic or therapeutic procedures.