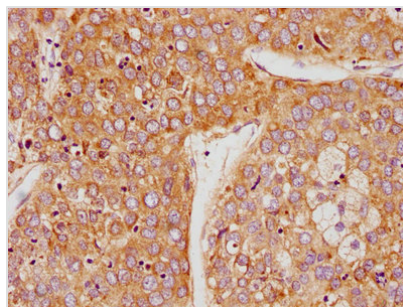




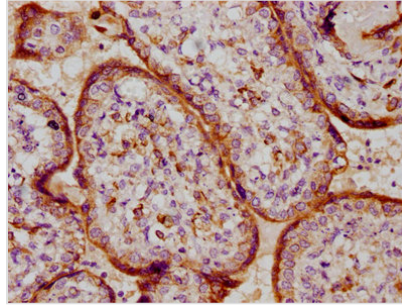
PSG9 Antibody

Product Code	CSB-PA27499A0Rb
Storage	Upon receipt, store at -20°C or -80°C. Avoid repeated freeze.
Uniprot No.	Q00887
Immunogen	Recombinant Human Pregnancy-specific beta-1-glycoprotein 9 protein (241-426AA)
Raised In	Rabbit
Species Reactivity	Human
Tested Applications	ELISA, IHC, IF; Recommended dilution: IHC:1:20-1:200, IF:1:50-1:200
Form	Liquid
Conjugate	Non-conjugated
Storage Buffer	Preservative: 0.03% Proclin 300 Constituents: 50% Glycerol, 0.01M PBS, pH 7.4
Purification Method	>95%, Protein G purified
Isotype	IgG
Clonality	Polyclonal
Alias	Pregnancy-specific beta-1-glycoprotein 9 (PS-beta-G-9) (PSBG-9) (Pregnancy-specific glycoprotein 9) (PS34) (Pregnancy-specific beta-1 glycoprotein B) (PS-beta-B) (Pregnancy-specific beta-1-glycoprotein 11) (PS-beta-G-11) (PSBG-11) (Pregnancy-specific glycoprotein 11) (Pregnancy-specific glycoprotein 7) (PSG7), PSG9, PSG11
Immunogen Species	Homo sapiens (Human)
Research Area	Tags & Cell Markers
Target Names	PSG9

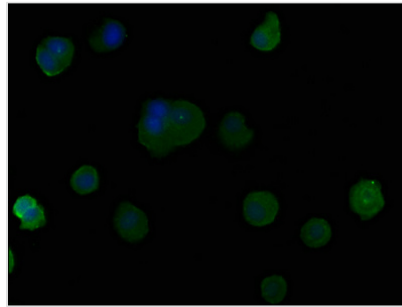
Image



IHC image of CSB-PA27499A0Rb diluted at 1:100 and staining in paraffin-embedded human liver cancer performed on a Leica Bond™ system. After dewaxing and hydration, antigen retrieval was mediated by high pressure in a citrate buffer (pH 6.0). Section was blocked with 10% normal goat serum 30min at RT. Then primary antibody (1% BSA) was incubated at 4°C overnight. The primary is detected by a biotinylated secondary antibody and visualized using an HRP conjugated SP system.



IHC image of CSB-PA27499A0Rb diluted at 1:100 and staining in paraffin-embedded human placenta tissue performed on a Leica Bond™ system. After dewaxing and hydration, antigen retrieval was mediated by high pressure in a citrate buffer (pH 6.0). Section was blocked with 10% normal goat serum 30min at RT. Then primary antibody (1% BSA) was incubated at 4°C overnight. The primary is detected by a biotinylated secondary antibody and visualized using an HRP conjugated SP system.



Immunofluorescence staining of MCF-7 cells with CSB-PA27499A0Rb at 1:50, counter-stained with DAPI. The cells were fixed in 4% formaldehyde, permeabilized using 0.2% Triton X-100 and blocked in 10% normal Goat Serum. The cells were then incubated with the antibody overnight at 4°C. The secondary antibody was Alexa Fluor 488-conjugated AffiniPure Goat Anti-Rabbit IgG(H+L).

Usage

For Research Use Only. Not for use in diagnostic or therapeutic procedures.