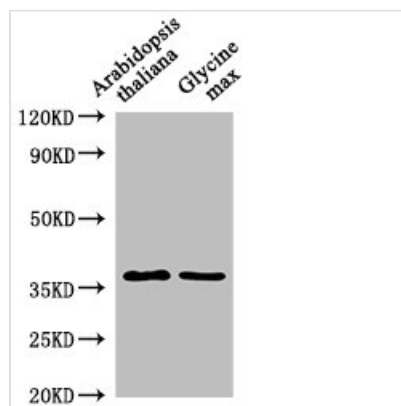




BG2 Antibody

Product Code	CSB-PA327203LA01DOA
Storage	Upon receipt, store at -20°C or -80°C. Avoid repeated freeze.
Uniprot No.	P33157
Immunogen	Recombinant Arabidopsis thaliana Glucan endo-1,3-beta-glucosidase, acidic isoform protein (31-339AA)
Raised In	Rabbit
Species Reactivity	Arabidopsis thaliana
Tested Applications	ELISA, WB; Recommended dilution: WB:1:500-1:2000
Form	Liquid
Conjugate	Non-conjugated
Storage Buffer	Preservative: 0.03% Proclin 300 Constituents: 50% Glycerol, 0.01M PBS, pH 7.4
Purification Method	>95%, Protein G purified
Isotype	IgG
Clonality	Polyclonal
Alias	Glucan endo-1,3-beta-glucosidase, acidic isoform (EC 3.2.1.39) ((1->3)-beta-glucan endohydrolase) ((1->3)-beta-glucanase) (Beta-1,3-endoglucanase) (Beta-1,3-glucanase 2) (AtBG2) (Pathogenesis-related protein 2) (PR-2), BG2
Immunogen Species	Arabidopsis thaliana
Research Area	Others
Target Names	BG2

Image



Western Blot

Positive WB detected in: Arabidopsis thaliana leaf tissue, Glycine max leaf tissue

All lanes: BG2 antibody at 1:1000

Secondary

Goat polyclonal to rabbit IgG at 1/50000 dilution

Predicted band size: 38 kDa

Observed band size: 38 kDa

Usage

For Research Use Only. Not for use in diagnostic or therapeutic procedures.