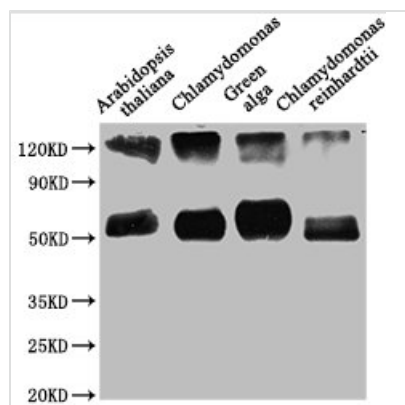




rbcl Antibody

Product Code	CSB-PA517305LA01DOA
Storage	Upon receipt, store at -20°C or -80°C. Avoid repeated freeze.
Uniprot No.	O03042
Immunogen	Recombinant Arabidopsis thaliana Ribulose biphosphate carboxylase large chain protein (3-479AA)
Raised In	Rabbit
Species Reactivity	Arabidopsis thaliana
Tested Applications	ELISA, WB; Recommended dilution: WB:1:500-1:2000
Form	Liquid
Conjugate	Non-conjugated
Storage Buffer	Preservative: 0.03% Proclin 300 Constituents: 50% Glycerol, 0.01M PBS, pH 7.4
Purification Method	>95%, Protein G purified
Isotype	IgG
Clonality	Polyclonal
Alias	Ribulose biphosphate carboxylase large chain (RuBisCO large subunit) (EC 4.1.1.39), rbcL
Immunogen Species	Arabidopsis thaliana
Research Area	Others
Target Names	rbcl

Image



Western Blot

Positive WB detected in: Arabidopsis thaliana leaf tissue, Chlamydomonas tissue, Green alga tissue, Chlamydomonas reinhardtii tissue

All lanes: rbcL antibody at 1:1250

Secondary

Goat polyclonal to rabbit IgG at 1/50000 dilution

Predicted band size: 53 kDa

Observed band size: 53 kDa