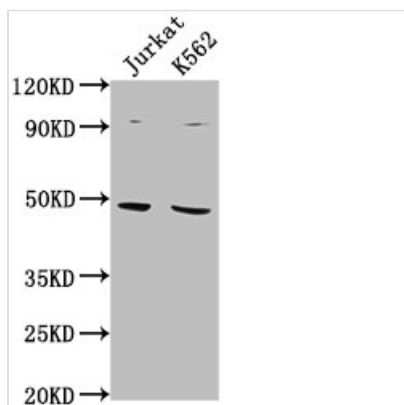




PSMD6 Antibody

Product Code	CSB-PA614875PA01HU
Storage	Upon receipt, store at -20°C or -80°C. Avoid repeated freeze.
Uniprot No.	Q15008
Immunogen	Peptide sequence from Human 26S proteasome non-ATPase regulatory subunit 6 protein (355-372AA)
Raised In	Rabbit
Species Reactivity	Human
Tested Applications	ELISA, WB, IHC, IF; Recommended dilution: WB:1:1000-1:5000, IHC:1:20-1:200, IF:1:50-1:200
Form	Liquid
Conjugate	Non-conjugated
Storage Buffer	Preservative: 0.03% Proclin 300 Constituents: 50% Glycerol, 0.01M PBS, pH 7.4
Purification Method	Antigen Affinity Purified
Isotype	IgG
Clonality	Polyclonal
Alias	26S proteasome non-ATPase regulatory subunit 6 (26S proteasome regulatory subunit RPN7) (26S proteasome regulatory subunit S10) (Breast cancer-associated protein SGA-113M) (Phosphonoformate immuno-associated protein 4) (Proteasome regulatory particle subunit p44S10) (p42A), PSMD6, KIAA0107 PFAAP4
Immunogen Species	Homo sapiens (Human)
Research Area	Cell Biology
Target Names	PSMD6

Image



Western Blot

Positive WB detected in: Jurkat whole cell lysate, K562 whole cell lysate

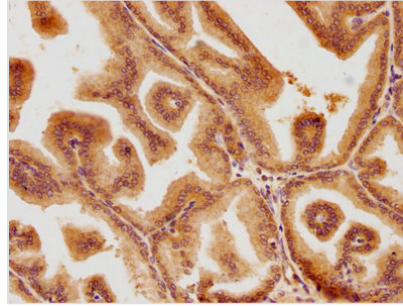
All lanes: PSMD6 antibody at 1:2000

Secondary

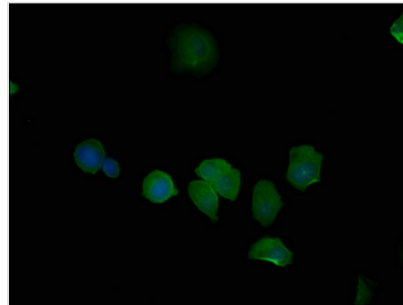
Goat polyclonal to rabbit IgG at 1/50000 dilution

Predicted band size: 46, 42, 52 kDa

Observed band size: 46 kDa



IHC image of CSB-PA614875PA01HU diluted at 1:100 and staining in paraffin-embedded human prostate tissue performed on a Leica Bond™ system. After dewaxing and hydration, antigen retrieval was mediated by high pressure in a citrate buffer (pH 6.0). Section was blocked with 10% normal goat serum 30min at RT. Then primary antibody (1% BSA) was incubated at 4°C overnight. The primary is detected by a biotinylated secondary antibody and visualized using an HRP conjugated SP system.



Immunofluorescence staining of MCF-7 cells with CSB-PA614875PA01HU at 1:50, counter-stained with DAPI. The cells were fixed in 4% formaldehyde, permeabilized using 0.2% Triton X-100 and blocked in 10% normal Goat Serum. The cells were then incubated with the antibody overnight at 4°C. The secondary antibody was Alexa Fluor 488-conjugated AffiniPure Goat Anti-Rabbit IgG(H+L).

Usage

For Research Use Only. Not for use in diagnostic or therapeutic procedures.