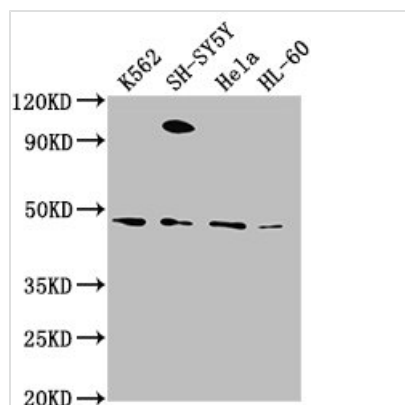




RTN4RL2 Antibody

Product Code	CSB-PA774805NA01HU
Storage	Upon receipt, store at -20°C or -80°C. Avoid repeated freeze.
Uniprot No.	Q86UN3
Immunogen	Peptide sequence from Human Reticulon-4 receptor-like 2 protein (355-372AA)
Raised In	Rabbit
Species Reactivity	Human
Tested Applications	ELISA, WB, IHC, IF; Recommended dilution: WB:1:1000-1:5000, IHC:1:20-1:200, IF:1:50-1:200
Form	Liquid
Conjugate	Non-conjugated
Storage Buffer	Preservative: 0.03% Proclin 300 Constituents: 50% Glycerol, 0.01M PBS, pH 7.4
Purification Method	Antigen Affinity Purified
Isotype	IgG
Clonality	Polyclonal
Alias	Reticulon-4 receptor-like 2 (Nogo receptor-like 3) (Nogo-66 receptor homolog 1) (Nogo-66 receptor-related protein 2) (NgR2), RTN4RL2, NGRH1 NGRL3
Immunogen Species	Homo sapiens (Human)
Research Area	Neuroscience
Target Names	RTN4RL2

Image



Western Blot

Positive WB detected in: K562 whole cell lysate, SH-SY5Y whole cell lysate, HeLa whole cell lysate, HL-60 whole cell lysate

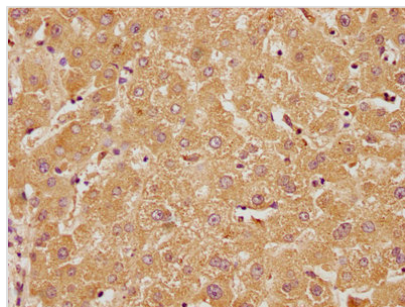
All lanes: RTN4RL2 antibody at 1:2000

Secondary

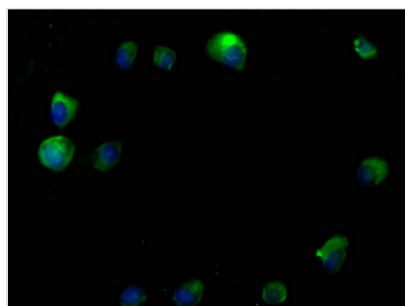
Goat polyclonal to rabbit IgG at 1/50000 dilution

Predicted band size: 47, 22 kDa

Observed band size: 47 kDa



IHC image of CSB-PA774805NA01HU diluted at 1:100 and staining in paraffin-embedded human liver tissue performed on a Leica Bond™ system. After dewaxing and hydration, antigen retrieval was mediated by high pressure in a citrate buffer (pH 6.0). Section was blocked with 10% normal goat serum 30min at RT. Then primary antibody (1% BSA) was incubated at 4°C overnight. The primary is detected by a biotinylated secondary antibody and visualized using an HRP conjugated SP system.



Immunofluorescence staining of MCF-7 cells with CSB-PA774805NA01HU at 1:50, counterstained with DAPI. The cells were fixed in 4% formaldehyde, permeabilized using 0.2% Triton X-100 and blocked in 10% normal Goat Serum. The cells were then incubated with the antibody overnight at 4°C. The secondary antibody was Alexa Fluor 488-conjugated AffiniPure Goat Anti-Rabbit IgG(H+L).

Usage

For Research Use Only. Not for use in diagnostic or therapeutic procedures.