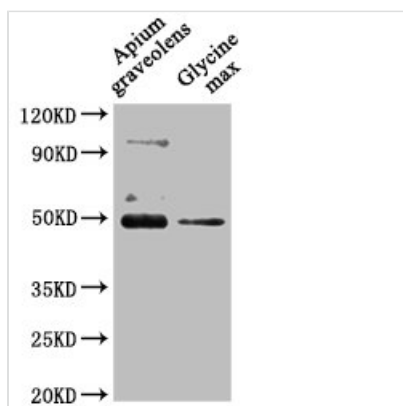




CRD1 Antibody

Product Code	CSB-PA862988LA01DOA
Storage	Upon receipt, store at -20°C or -80°C. Avoid repeated freeze.
Uniprot No.	Q9M591
Immunogen	Recombinant Arabidopsis thaliana Magnesium-protoporphyrin IX monomethyl ester [oxidative] cyclase, chloroplastic protein (37-409AA)
Raised In	Rabbit
Species Reactivity	Arabidopsis thaliana
Tested Applications	ELISA, WB; Recommended dilution: WB:1:500-1:2000
Form	Liquid
Conjugate	Non-conjugated
Storage Buffer	Preservative: 0.03% Proclin 300 Constituents: 50% Glycerol, 0.01M PBS, pH 7.4
Purification Method	>95%, Protein G purified
Isotype	IgG
Clonality	Polyclonal
Alias	Magnesium-protoporphyrin IX monomethyl ester [oxidative] cyclase, chloroplastic (Mg-protoporphyrin IX monomethyl ester oxidative cyclase) (EC 1.14.13.81) (Copper response defect 1 protein) (Dicarboxylate diiron protein) (AtZIP) (MPE-cyclase), CRD1, ACSF AT103 CHL27 ZIP
Immunogen Species	Arabidopsis thaliana
Research Area	Others
Target Names	CRD1

Image



Western Blot

Positive WB detected in: Apium graveolens leaf tissue, Glycine max leaf tissue

All lanes: CRD1 antibody at 1:1000

Secondary

Goat polyclonal to rabbit IgG at 1/50000 dilution

Predicted band size: 48 kDa

Observed band size: 48 kDa

Usage

For Research Use Only. Not for use in diagnostic or therapeutic procedures.