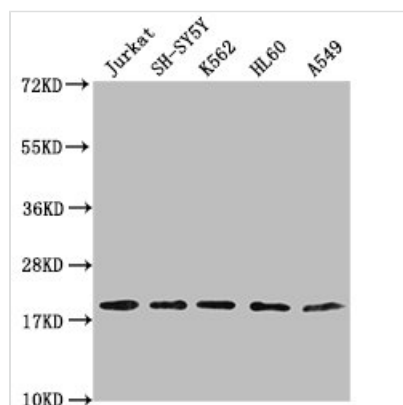




RPL24 Antibody

Product Code	CSB-PA020202LA01HU
Storage	Upon receipt, store at -20°C or -80°C. Avoid repeated freeze.
Uniprot No.	P83731
Immunogen	Recombinant Human 60S ribosomal protein L24 protein (1-157AA)
Raised In	Rabbit
Species Reactivity	Human
Tested Applications	ELISA, WB; Recommended dilution: WB:1:1000-1:5000
Form	Liquid
Conjugate	Non-conjugated
Storage Buffer	Preservative: 0.03% Proclin 300 Constituents: 50% Glycerol, 0.01M PBS, pH 7.4
Purification Method	>95%, Protein G purified
Isotype	IgG
Clonality	Polyclonal
Alias	60S ribosomal protein L24 (60S ribosomal protein L30) (Large ribosomal subunit protein eL24), RPL24
Immunogen Species	Homo sapiens (Human)
Research Area	Epigenetics and Nuclear Signaling
Target Names	RPL24

Image



Western Blot

Positive WB detected in: Jurkat whole cell lysate, SH-SY5Y whole cell lysate, K562 whole cell lysate, HL-60 whole cell lysate, A549 whole cell lysate

All lanes: RPL24 antibody at 1:2000

Secondary

Goat polyclonal to rabbit IgG at 1/50000 dilution

Predicted band size: 18 kDa

Observed band size: 18 kDa